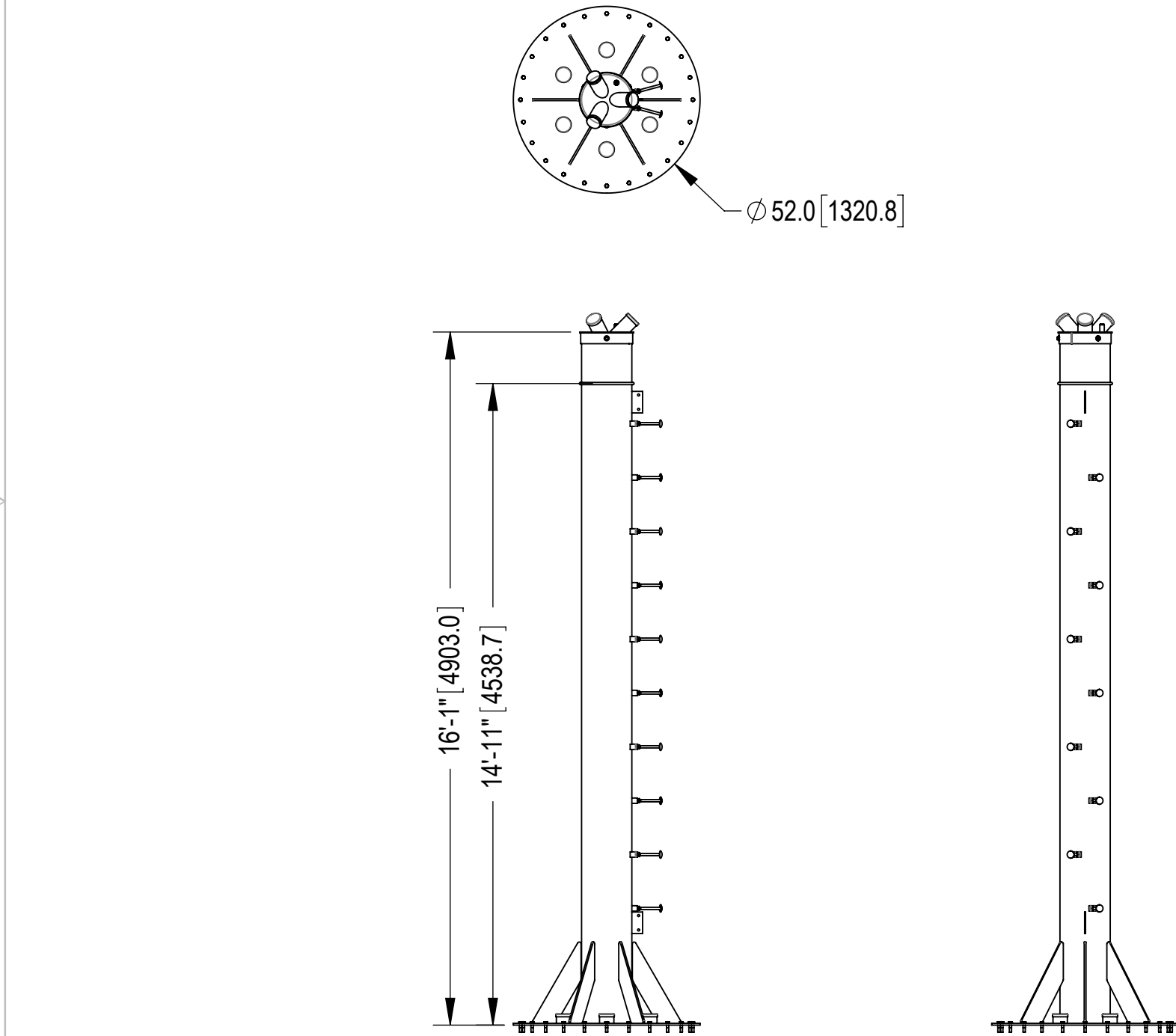


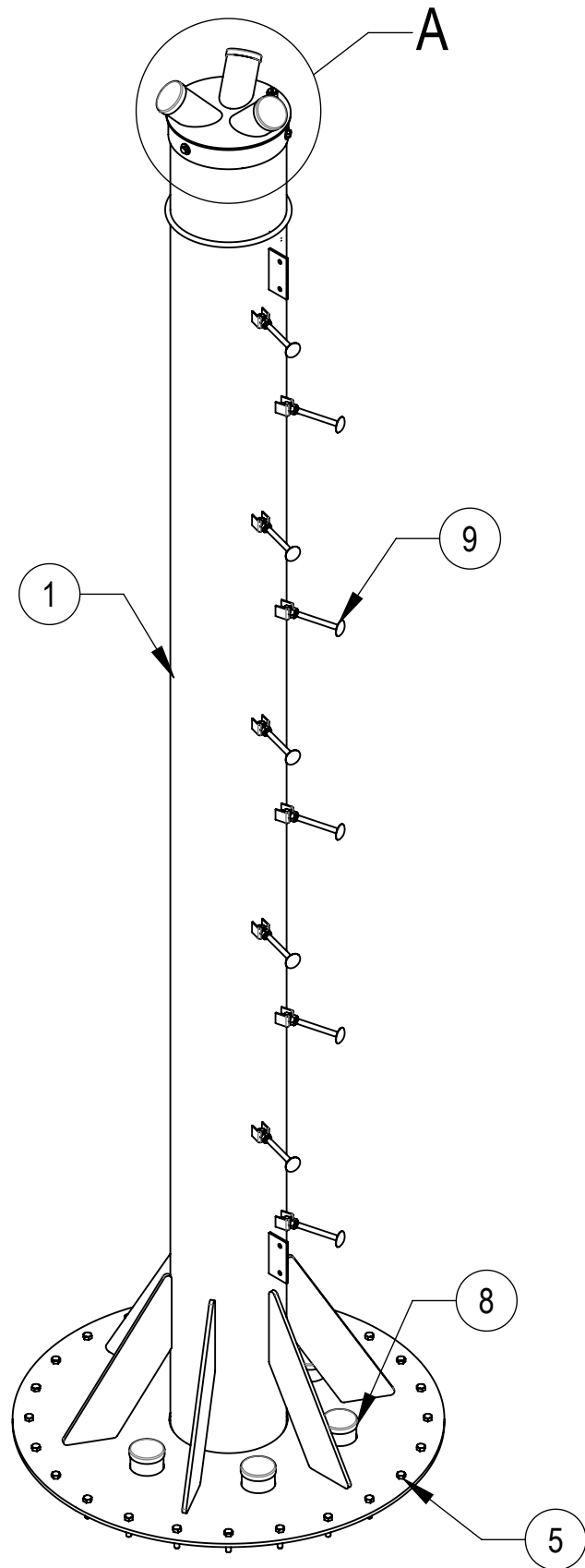
1.0 GENERAL NOTES  
1.1 ALL METRIC DIMENSIONS ARE IN BRACKETS [X. X]  
1.2 FOR PATENT INFO: <https://www.cs-pat.com>  
2.0 DESIGN NOTES  
2.1 ANY HAZARDS OR OBSTRUCTIONS TO THE CLIMBING FACILITY AND SAFETY CLIMB MUST BE IDENTIFIED PRIOR TO INSTALLING THE APPURTENANCE. ADDITIONAL PRODUCTS MAY BE REQUIRED TO MAINTAIN THE INTEGRITY OF THE SAFETY CLIMB. DURING INSTALLATION, TEMPORARY AND/OR PERMANENT PRECAUTIONARY MEASURES SHOULD BE TAKEN TO PRESERVE THE CLIMBING FACILITY AND/OR SAFETY CLIMB.  
3.0 MANUFACTURING/SPECIAL REQUIREMENTS  
3.1 TIGHTEN ALL BOLTS SECURING FLAT PLATES BY THE TURN-OF-NUT METHOD.  
3.2 DB-6118020 NOT SHOWN BUT INCLUDED.  
4.0 TEST  
5.0 PACKAGING  
5.1 PACKAGING SHALL MEET COMMSCOPE REQUIREMENTS PER DOCUMENT IS-PL-3005  
5.2 PRINTED DOCUMENT TO BE PLACED INSIDE POLYBAG AND THEN IN SHIPPING CONTAINER  
5.3 EXTRA HARDWARE MAY BE SUPPLIED, BAGGED AND SHIPPED



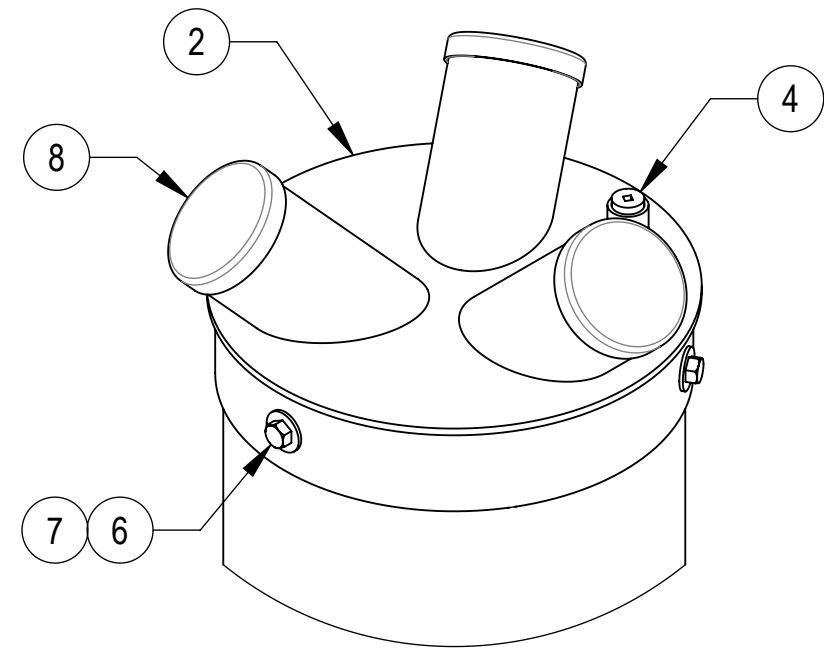
COMPONENT PART NUMBERS PROVIDED FOR ASSEMBLY PURPOSES;  
INDIVIDUAL COMPONENTS MAY BE SHIPPED AS PARTS WITHIN AN INCLUDED KIT.

ITEM NO.	PART NUMBER	DESCRIPTION	QTY.	WEIGHT	NOTE NO.
1	WTMMP01	MONOPOLE WELDMENT	1	1402.31 LBS	
2	WTMMP22	3 PORT COVER	1	26.15 LBS	
3	DB-6118020	DBI/SALA SAFETY CLIMB KIT	1		3.2
4	WTSPM.38	1" TAPERED PLUG 1" EXTERNAL THREAD	1	0.20 LBS	
5	GB-0524A	5/8" X 2-1/2" GALV BOLT KIT (A325)	24	0.30 LBS	
6	GB-04145	1/2" X 1-1/2" GALV BOLT KIT	3	0.13 LBS	
7	GWF-04	1/2" GALV FLAT WASHER	3	0.04 LBS	
8	CAP-4	FOUR INCH SNAP-IN ENTRY PORT CAP	9	0.00 LBS	
9	MT750	STEP BOLT	10	1.14 LBS	


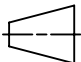
© 2023 CommScope, Inc. Confidential



REVISIONS			
REV.	DESCRIPTION	DATE	APPROVED
E	UPDATE WTMMP.01, ADD FLAT WASHERS & REPLACE WTMMP.02	ACG 05DEC08	
F	EPCAP4.01 WAS EPCAP4B.01	DRR 01MAR11	
G	UPDATED DRAWING FORMAT/ UPDATED NOTES; CAP-4 (ITEM 8) WAS EPCAP4.01;	HDAI 30AUG23	BA1025 40177316CMO
H	MT750 WAS MT75001; DB-6118020 WAS WTMMP19	YX1027 17JUL24	BA1025 40200320CMO



DETAIL A  
SCALE 11 : 64

COMMSCOPE, INC. OF NORTH CAROLINA											
TOLERANCES						SAP MATERIAL MASTER					
1 PLACE .X[X] ± 0.2[6.3]      3 PLACE .XXX[X] ± 0.060[1.5]						WT-MMP					
2 PLACE .XX[X] ± 0.12[3.0]      ANGLES      ±      1°											
FINISH						MATERIAL					
UNLESS OTHERWISE SPECIFIED DIMENSIONS ARE IN INCHES INTERPRET PER ANSI Y 14.5M-1994		NAME	DATE	16' MINI MONOPOLE							
	CE	ACG	12DEC06								
	RW	YX1027	07/23/2024								
	AD	YMENG	07/23/2024	SCALE 1:2	DOCUMENT NO.  WT-MMP						
	RE	YMENG	07/23/2024								
	ECN 40200320CMO										
SIZE	Auth Group	INSL	MODEL			DRAWING			SHEET 1 OF 1		
C			VERSION	STATUS	REVISION	VERSION	STATUS	REVISION			
			02	RE	H	02	RE	H			