

# RRZZHHTTVV65CR10V3



20-port sector antenna, 4x 694–960 , 4x 1427–2690, 4x 1695-2180, 4x 2490-2690 and 4x 1695-2690MHz, 65° HPBW, 10x RET

- SEED® antenna providing high gain and improved efficiency
- High radiation and pattern efficiency for improved coverage area, capacity or reduced power consumption for a given area
- Reduces the amount of aluminum used to minimize CO2 release
- Innovative aerodynamic shape optimized for reduced wind loading in every direction

## General Specifications

Antenna Type	Sector
Band	Multiband
Grounding Type	RF connector inner conductor and body grounded to reflector and mounting bracket
Performance Note	Outdoor usage
RF Connector Interface	4.3-10 Female
RF Connector Location	Bottom
RF Connector Quantity, high band	0
RF Connector Quantity, mid band	16
RF Connector Quantity, low band	4
RF Connector Quantity, total	20

## Remote Electrical Tilt (RET) Information

RET Hardware	CommRET v2
RET Interface	8-pin DIN Female   8-pin DIN Male
RET Interface, quantity	2 female   2 male
Input Voltage	10–30 Vdc
Internal RET	Low band (2)   Mid band (8)
Power Consumption, active state, maximum	8 W
Power Consumption, idle state, maximum	1 W
Protocol	3GPP/AISG 2.0

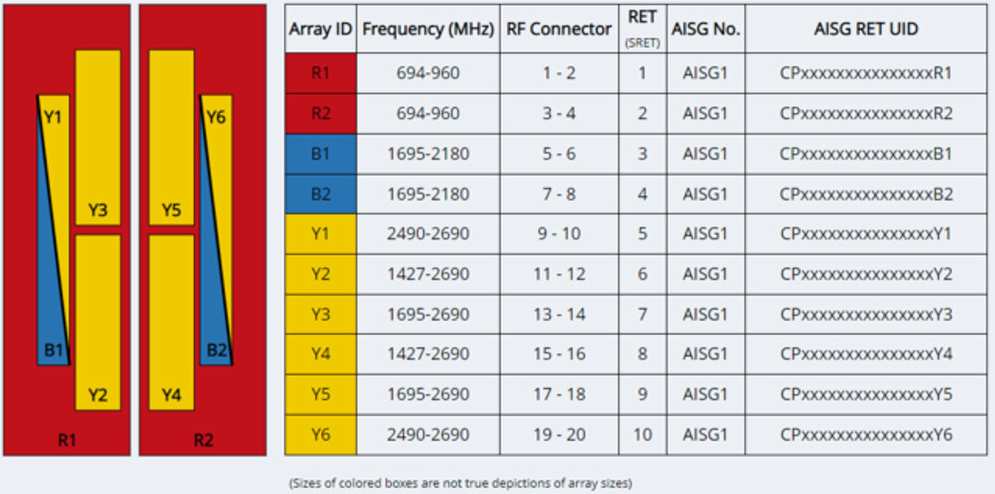
## Dimensions

Width	498 mm   19.606 in
-------	--------------------

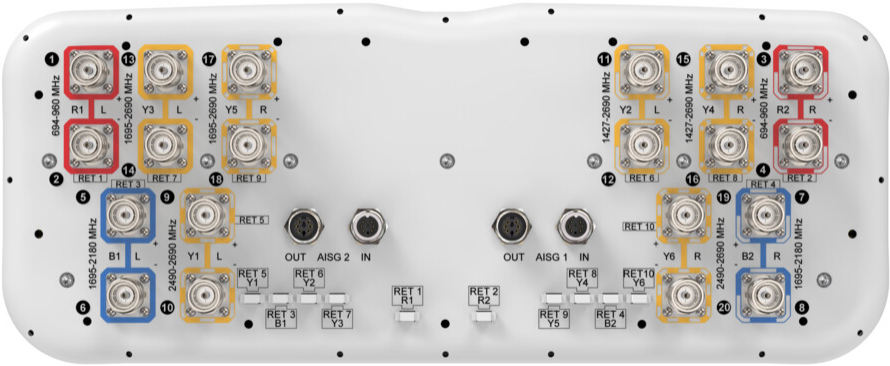
# RRZZHHTTVV65CR10V3

Depth	197 mm   7.756 in
Length	2258 mm   88.898 in
Net Weight, antenna only	41.4 kg   91.271 lb

## Array Layout



## Port Configuration



## Electrical Specifications

Impedance	50 ohm
Operating Frequency Band	1427 – 2690 MHz   1695 – 2180 MHz   1695 – 2690 MHz   2490 – 2690 MHz   694 – 960 MHz
Polarization	±45°

# RRZZHHTTVV65CR10V3

Total Input Power, maximum 900 W @ 50 °C

## Electrical Specifications

	R1,R2	R1,R2	R1,R2	B1,B2	B1,B2	Y1,Y6	Y2,Y4
Frequency Band, MHz	698–806	790–894	890–960	1695–1995	1920–2180	2490–2690	1427–1518
RF Port	1-4	1-4	1-4	5-8	5-8	9,10,19,20	11,12,15,16
Gain at Mid Tilt, dBi	15.2	15.8	15.7	17.4	18.2	18.3	14.8
Beamwidth, Horizontal, degrees	72	64	66	69	65	57	72
Beamwidth, Vertical, degrees	9.8	8.6	7.8	5.6	5	4.2	10.4
Beam Tilt, degrees	2–12	2–12	2–12	2–12	2–12	2–12	2–12
USLS (First Lobe), dB	18	17	17	17	17	17	15
Front-to-Back Ratio at 180°, dB	31	31	31	32	30	32	33
Front-to-Back Total Power at 180° ± 30°, dB	21	21	21	27	26	27	23
Isolation, Cross Polarization, dB	26	26	26	25	25	25	25
Isolation, Inter-band, dB	26	26	26	25	25	25	25
VSWR   Return loss, dB	1.5   14.0	1.5   14.0	1.5   14.0	1.5   14.0	1.5   14.0	1.5   14.0	1.5   14.0
PIM, 3rd Order, 2 x 20 W, dBc	-153	-153	-153	-153	-153	-153	-153
Input Power per Port at 50°C, maximum, watts	300	300	300	250	250	200	250

## Electrical Specifications

	Y2,Y4	Y2,Y4	Y2,Y4	Y2,Y4
Frequency Band, MHz	1695–1995	1920–2300	2300–2500	2490–2690
RF Port	11,12,15,16	11,12,15,16	11,12,15,16	11,12,15,16
Gain at Mid Tilt, dBi	16.6	17.3	18	18.2
Beamwidth, Horizontal, degrees	65	61	56	54
Beamwidth, Vertical, degrees	8.3	7.4	6.4	6
Beam Tilt, degrees	2–12	2–12	2–12	2–12
USLS (First Lobe), dB	17	18	18	18
Front-to-Back Ratio at 180°, dB	33	33	32	32
Front-to-Back Total Power at 180° ± 30°, dB	30	29	28	28

# RRZZHHTTVV65CR10V3

Isolation, Cross Polarization, dB	25	25	25	25
Isolation, Inter-band, dB	25	25	25	25
VSWR   Return loss, dB	1.5   14.0	1.5   14.0	1.5   14.0	1.5   14.0
PIM, 3rd Order, 2 x 20 W, dBc	-153	-153	-153	-153
Input Power per Port at 50°C, maximum, watts	250	250	200	200

## Electrical Specifications

	Y3,Y5	Y3,Y5	Y3,Y5	Y3,Y5
Frequency Band, MHz	1695–1995	1920–2300	2300–2500	2490–2690
RF Port	13,14,17,18	13,14,17,18	13,14,17,18	13,14,17,18
Gain at Mid Tilt, dBi	16.5	17.4	17.8	18
Beamwidth, Horizontal, degrees	65	58	56	57
Beamwidth, Vertical, degrees	8.6	7.6	6.6	6.3
Beam Tilt, degrees	2–12	2–12	2–12	2–12
USLS (First Lobe), dB	16	16	16	19
Front-to-Back Ratio at 180°, dB	33	33	33	33
Front-to-Back Total Power at 180° ± 30°, dB	30	30	30	29
Isolation, Cross Polarization, dB	25	25	25	25
Isolation, Inter-band, dB	25	25	25	25
VSWR   Return loss, dB	1.5   14.0	1.5   14.0	1.5   14.0	1.5   14.0
PIM, 3rd Order, 2 x 20 W, dBc	-153	-153	-153	-153
Input Power per Port at 50°C, maximum, watts	250	250	200	200

## Mechanical Specifications

Wind Loading @ Velocity, frontal	768.0 N @ 150 km/h (172.7 lbf @ 150 km/h)
Wind Loading @ Velocity, lateral	201.0 N @ 150 km/h (45.2 lbf @ 150 km/h)
Wind Loading @ Velocity, maximum	1,020.0 N @ 150 km/h (229.3 lbf @ 150 km/h)
Wind Loading @ Velocity, rear	528.0 N @ 150 km/h (118.7 lbf @ 150 km/h)
Wind Speed, maximum	241 km/h (150 mph)

## Packaging and Weights

# RRZZHHTTVV65CR10V3

Width, packed	565 mm   22.244 in
Depth, packed	309 mm   12.165 in
Length, packed	2445 mm   96.26 in
Weight, gross	52.6 kg   115.963 lb

## Regulatory Compliance/Certifications

Agency	Classification
CHINA-ROHS	Below maximum concentration value
ISO 9001:2015	Designed, manufactured and/or distributed under this quality management system
REACH-SVHC	Compliant as per SVHC revision on <a href="http://www.commscope.com/ProductCompliance">www.commscope.com/ProductCompliance</a>
ROHS	Compliant
UK-ROHS	Compliant



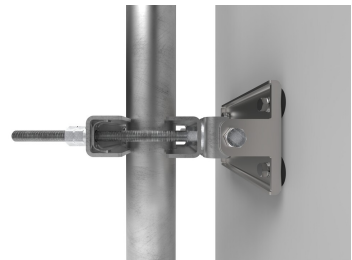
## Included Products

BSAMNT-2F	–	Mounting bracket for cylindrical pipe installations (60-115mm pipe diameter) for fix mechanical tilt applications.
-----------	---	--

## \* Footnotes

Performance Note	Severe environmental conditions may degrade optimum performance
------------------	---

# BSAMNT-2F



Mounting bracket for cylindrical pipe installations (60-115mm pipe diameter) for fix mechanical tilt applications.

## Product Classification

**Product Type** Fixed tilt mounting kit

## General Specifications

**Application** Outdoor

**Color** Silver

## Dimensions

**Compatible Diameter, maximum** 115 mm | 4.528 in

**Compatible Diameter, minimum** 60 mm | 2.362 in

**Weight, net** 3.8 kg | 8.378 lb

## Material Specifications

**Material Type** Galvanized steel

## Packaging and Weights

**Included** Brackets | Hardware

**Packaging quantity** 1

**Weight, gross** 4 kg | 8.818 lb

## Regulatory Compliance/Certifications

Agency	Classification
CE	Compliant with the relevant CE product directives
CHINA-ROHS	Below maximum concentration value
ISO 9001:2015	Designed, manufactured and/or distributed under this quality management system
REACH-SVHC	Compliant as per SVHC revision on <a href="http://www.andrew.com/ProductCompliance">www.andrew.com/ProductCompliance</a>
ROHS	Compliant
UK-ROHS	Compliant

# BSAMNT-2F

---

