

SFG22-14-3-126



G22 High Capacity Sector Frame, 14.5 ft face, includes three 126 in pipes;
For patents, see www.cs-pat.com.

OBSOLETE

This product was discontinued on: March 22, 2023

Replaced By:

SFG22HDX-14-4-126

G22HDX High Capacity Sector Frame with 2 7/8in OD x 14.5ft face. Includes four 2 7/8in OD x 126in antenna pipes.

Product Classification

Product Type

High capacity Tower sector frame

General Specifications

Application

4G LTE antenna/radio mount

Mounting

Angle 60°, 203.2 mm (8 in) | Straight or tapered legs up to 203.2 mm (8 in) OD

Patent Number

Patent pending

Pipe, quantity

3

Tower Taper

Non-tapered | Tapered

Dimensions

Height

3,200.4 mm | 126 in

Face Width

4.42 m | 14.5 ft

Width

4,419.6 mm | 174 in

Pipe Length

3,200.4 mm | 126 in

Face Support Pipe Diameter

60.325 mm | 2.375 in

Mounting Diameter, maximum

218.44 mm | 8.6 in

Mounting Diameter, minimum

38.1 mm | 1.5 in

Pipe Outer Diameter

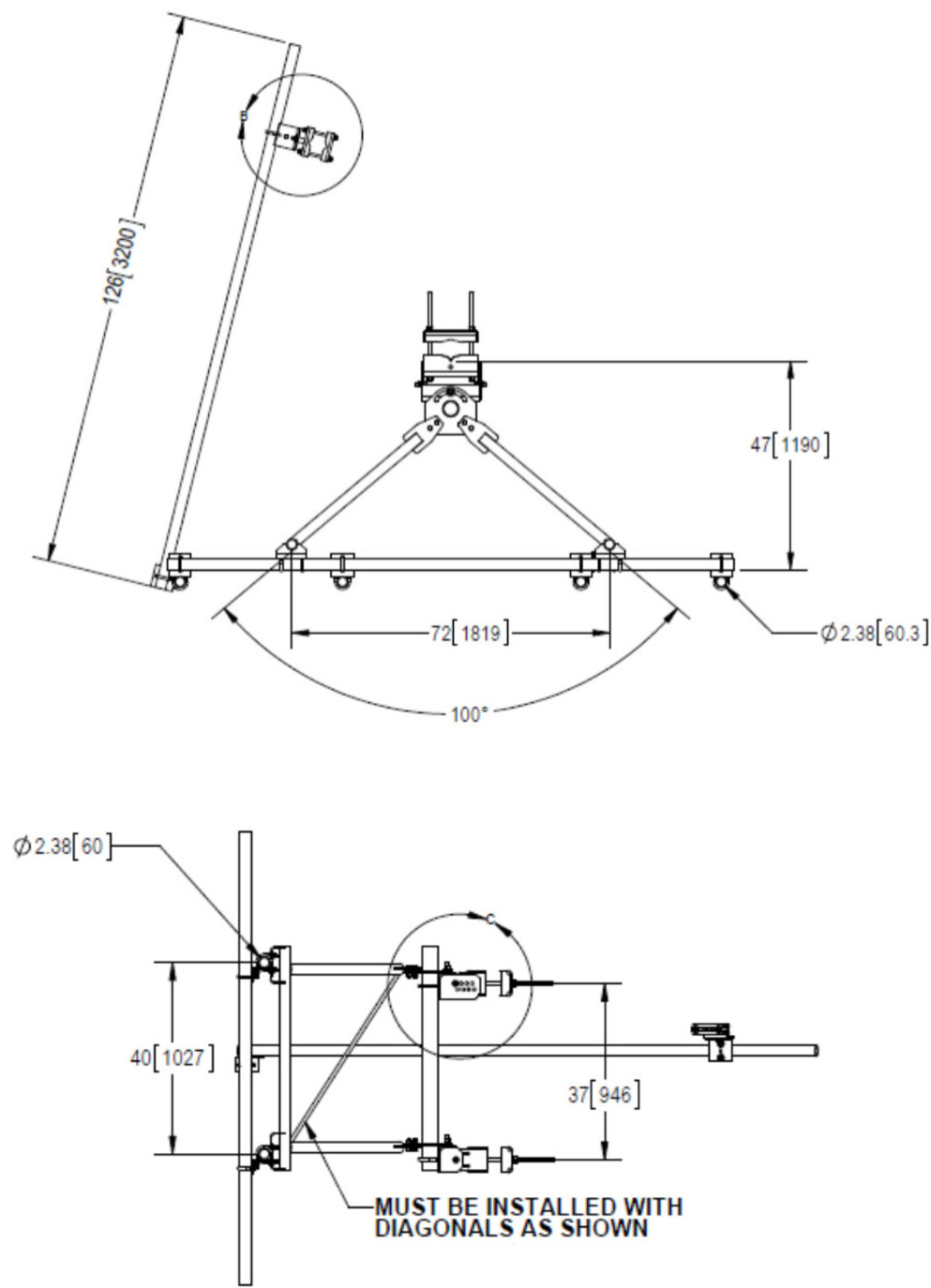
60.325 mm | 2.375 in

Stand-off Distance

1,193.8 mm | 47 in

SFG22-14-3-126

Outline Drawing



Material Specifications

Material Type Hot dip galvanized steel

Mechanical Specifications

Load Capacity	With additional stiff arm at 300 ft AGL: 600 lb per pipe w/out ice / 1275 lb per pipe including ice
Wind Rating	For Specifications, please contact your local ANDREW representative
Wind Rating Test Method	TIA/EIA-222-G
Wind Rating with Additional Stiff Arm	300 ft AGL: 120 mph (BWS) without ice /60 mph with ice

Packaging and Weights

Included	Frame Pipe mounts Plain end pipes (3) Stiff arm Tower attachment
Packaging quantity	1
Weight, net	236.095 kg 520.5 lb

Regulatory Compliance/Certifications

Agency	Classification
CHINA-ROHS	Above maximum concentration value
ISO 9001:2015	Designed, manufactured and/or distributed under this quality management system
ROHS	Compliant/Exempted
UK-ROHS	Compliant/Exempted



* Footnotes

Wind Rating	BWS—Base Wind Speed; FBC—Florida Building Code
Wind Rating with Additional Stiff Arm	BWS—Base Wind Speed; FBC—Florida Building Code