

R3V6-65B-R9



18-port sector antenna, 6x 694-960, 12x 1695-2690 MHz, 65° HPBW, 9xRET

- All Internal RET actuators are connected in "Cascaded SRET" configuration
- Supports re-configurable antenna sharing capability enabling control of the internal RET system using up to two separate RET compatible OEM radios

General Specifications

Antenna Type	Sector
Band	Multiband
Color	Light Gray (RAL 7035)
Grounding Type	RF connector inner conductor and body grounded to reflector and mounting bracket
Performance Note	Outdoor usage
Radome Material	Fiberglass, UV resistant
Reflector Material	Aluminum
RF Connector Interface	4.3-10 Female
RF Connector Location	Bottom
RF Connector Quantity, mid band	12
RF Connector Quantity, low band	6
RF Connector Quantity, total	18

Remote Electrical Tilt (RET) Information

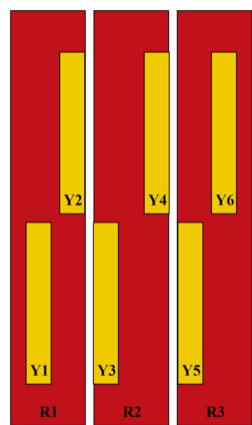
RET Hardware	CommRET v2
RET Interface	8-pin DIN Female 8-pin DIN Male
RET Interface, quantity	2 female 2 male
Input Voltage	10-30 Vdc
Internal RET	Low band (3) Mid band (6)
Power Consumption, active state, maximum	8 W
Power Consumption, idle state, maximum	1 W
Protocol	3GPP/AISG 2.0

R3V6-65B-R9

Dimensions

Width	579 mm 22.795 in
Depth	212 mm 8.346 in
Length	2100 mm 82.677 in
Net Weight, antenna only	47.7 kg 105.16 lb

Array Layout

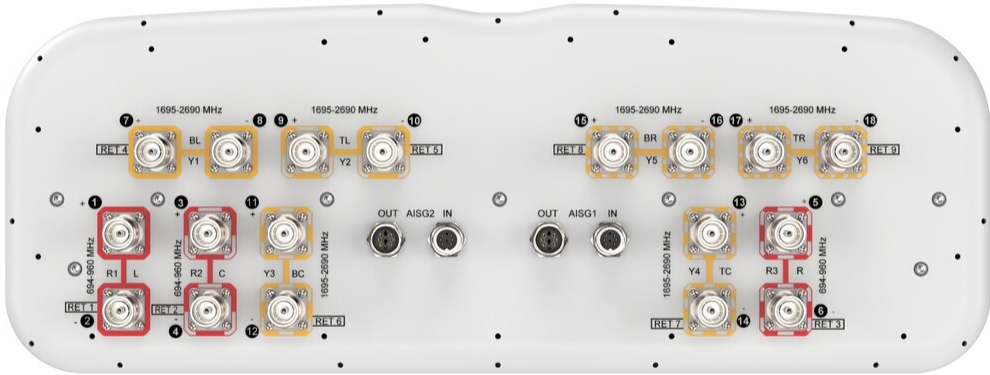


Array ID	Frequency (MHz)	RF Connector	RET (SRET)	AISG No.	AISG RET UID
R1	694-960	1 - 2	1	AISG1	CPxxxxxxxxxxxxR1
R2	694-960	3 - 4	2	AISG1	CPxxxxxxxxxxxxR2
R3	694-960	5 - 6	3	AISG1	CPxxxxxxxxxxxxR3
Y1	1695-2690	7 - 8	4	AISG1	CPxxxxxxxxxxxxY1
Y2	1695-2690	9 - 10	5	AISG1	CPxxxxxxxxxxxxY2
Y3	1695-2690	11 - 12	6	AISG1	CPxxxxxxxxxxxxY3
Y4	1695-2690	13 - 14	7	AISG1	CPxxxxxxxxxxxxY4
Y5	1695-2690	15 - 16	8	AISG1	CPxxxxxxxxxxxxY5
Y6	1695-2690	17 - 18	9	AISG1	CPxxxxxxxxxxxxY6

(Sizes of colored boxes are not true depictions of array sizes)

Port Configuration

R3V6-65B-R9



Electrical Specifications

Impedance	50 ohm
Operating Frequency Band	1695 – 2690 MHz 694 – 960 MHz
Polarization	±45°
Total Input Power, maximum	900 W @ 50 °C

Electrical Specifications

	R1,R3	R1,R3	R1,R3	R2	R2	R2
Frequency Band, MHz	698–806	790–894	890–960	698–806	790–894	890–960
RF Port	1, 2, 5, 6	1, 2, 5, 6	1, 2, 5, 6	3, 4	3, 4	3, 4
Gain at Mid Tilt, dBi	13.9	14.4	14.8	12.4	13.6	14.7
Beamwidth, Horizontal,	65	60	55	69	57	51

R3V6-65B-R9

degrees

Beamwidth, Vertical, degrees	10.5	9.2	8.7	10.9	10.6	9.9
Beam Tilt, degrees	2–12	2–12	2–12	2–12	2–12	2–12
USLS (First Lobe), dB	14	16	16	12	16	16
Front-to-Back Ratio at 180°, dB	25	24	25	25	26	30
Front-to-Back Total Power at 180° ± 30°, dB	20	20	22	22	23	26
Isolation, Cross Polarization, typical, dB	25	25	25	25	25	25
Isolation, Inter-band, typical, dB	25	25	25	25	25	25
VSWR Return loss, dB	1.5 14.0	1.5 14.0	1.5 14.0	1.5 14.0	1.5 14.0	1.5 14.0
PIM, 3rd Order, 2 x 20 W, dBc	-153	-153	-153	-153	-153	-153
Input Power per Port at 50°C, maximum, watts	300	300	300	300	300	300

Electrical Specifications

	Y1,Y3,Y5	Y1,Y3,Y5	Y1,Y3,Y5	Y1,Y3,Y5
Frequency Band, MHz	1695–1990	1920–2300	2300–2500	2490–2690
RF Port	7, 8, 11, 12, 15, 16	7, 8, 11, 12, 15, 16	7, 8, 11, 12, 15, 16	7, 8, 11, 12, 15, 16
Gain at Mid Tilt, dBi	16.2	17.1	18	18
Beamwidth, Horizontal, degrees	63	65	57	59
Beamwidth, Vertical, degrees	6.7	6.1	5.3	5.1
Beam Tilt, degrees	2–12	2–12	2–12	2–12
USLS (First Lobe), dB	16	16	18	20
Front-to-Back Ratio at 180°, dB	29	29	33	33
Front-to-Back Total Power at 180° ± 30°, dB	23	23	25	27
Isolation, Cross Polarization, dB	25	25	25	25
Isolation, Inter-band, dB	25	25	25	25
VSWR Return loss, dB	1.5 14.0	1.5 14.0	1.5 14.0	1.5 14.0
PIM, 3rd Order, 2 x 20 W, dBc	-153	-153	-153	-153
Input Power per Port at 50°C, maximum, watts	250	250	200	200

R3V6-65B-R9

Electrical Specifications

	Y2,Y4,Y6	Y2,Y4,Y6	Y2,Y4,Y6	Y2,Y4,Y6
Frequency Band, MHz	1695–1990	1920–2300	2300–2500	2490–2690
RF Port	9, 10, 13, 14, 17, 18	9, 10, 13, 14, 17, 18	9, 10, 13, 14, 17, 18	9, 10, 13, 14, 17, 18
Gain at Mid Tilt, dBi	16	16.9	17.5	17.4
Beamwidth, Horizontal, degrees	60	59	58	62
Beamwidth, Vertical, degrees	6.6	5.9	5.4	5.1
Beam Tilt, degrees	2–12	2–12	2–12	2–12
USLS (First Lobe), dB	14	16	17	15
Front-to-Back Ratio at 180°, dB	30	30	32	33
Front-to-Back Total Power at 180° ± 30°, dB	25	25	26	27
Isolation, Cross Polarization, dB	25	25	25	25
Isolation, Inter-band, dB	25	25	25	25
VSWR Return loss, dB	1.5 14.0	1.5 14.0	1.5 14.0	1.5 14.0
PIM, 3rd Order, 2 x 20 W, dBc	-153	-153	-153	-153
Input Power per Port at 50°C, maximum, watts	250	250	200	200

Mechanical Specifications

Wind Loading @ Velocity, frontal	576.0 N @ 150 km/h (129.5 lbf @ 150 km/h)
Wind Loading @ Velocity, lateral	241.0 N @ 150 km/h (54.2 lbf @ 150 km/h)
Wind Loading @ Velocity, maximum	919.0 N @ 150 km/h (206.6 lbf @ 150 km/h)
Wind Loading @ Velocity, rear	584.0 N @ 150 km/h (131.3 lbf @ 150 km/h)

Packaging and Weights

Width, packed	681 mm 26.811 in
Depth, packed	368 mm 14.488 in
Length, packed	2239 mm 88.15 in
Weight, gross	62.3 kg 137.348 lb

Regulatory Compliance/Certifications

Agency	Classification
--------	----------------

R3V6-65B-R9

CHINA-ROHS	Below maximum concentration value
ISO 9001:2015	Designed, manufactured and/or distributed under this quality management system
REACH-SVHC	Compliant as per SVHC revision on www.andrew.com/ProductCompliance
ROHS	Compliant
UK-ROHS	Compliant



Included Products

BSAMNT-4	–	Wide Profile Antenna Downtilt Mounting Kit for 2.4 - 4.5 in (60 - 115 mm) OD round members. Kit contains one scissor top bracket set and one bottom bracket set.
----------	---	---

* Footnotes

Performance Note	Severe environmental conditions may degrade optimum performance
-------------------------	---

BSAMNT-4



Wide Profile Antenna Downtilt Mounting Kit for 2.4 - 4.5 in (60 - 115 mm) OD round members. Kit contains one scissor top bracket set and one bottom bracket set.

Product Classification

Product Type Downtilt mounting kit

General Specifications

Application Outdoor

Color Silver

Dimensions

Compatible Diameter, maximum 115 mm | 4.528 in

Compatible Diameter, minimum 60 mm | 2.362 in

Weight, net 6.5 kg | 14.33 lb

Material Specifications

Material Type Galvanized steel

Packaging and Weights

Included Brackets | Hardware

Packaging quantity 1

Regulatory Compliance/Certifications

Agency	Classification
CHINA-ROHS	Below maximum concentration value
ISO 9001:2015	Designed, manufactured and/or distributed under this quality management system
REACH-SVHC	Compliant as per SVHC revision on www.andrew.com/ProductCompliance
ROHS	Compliant
UK-ROHS	Compliant

