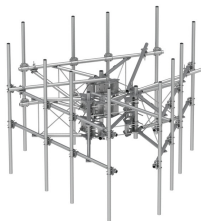


MCG23HDX-12M-12126



G23HDX High Capacity 3-Sector Monopole Frame, 12.5 ft 2.88 in OD face pipes, includes twelve 2.88 OD 126 in pipes; For patents, see www.cs-pat.com.

OBSOLETE

This product was discontinued on: July 29, 2022

Replaced By:

MCG23HDX-12M12120	G23HDX High Capacity 3-Sector Monopole Sector Frame, 12.5 ft x 2.88 in OD face pipes, includes twelve 2.88 OD x 120 in pipes
-------------------	--

Product Classification

Product Type	High capacity monopole sector frame
---------------------	-------------------------------------

General Specifications

Mounting Monopole, 381–1270 mm (15–50 in) OD

Pipe, quantity	12
-----------------------	----

Sectors, quantity	3
--------------------------	---

Dimensions

Height 3,200.4 mm | 126 in

Face Width 3.81 m | 12.5 ft

Width 3,810 mm | 150 in

Pipe Length 3,200.4 mm | 126 in

Face Support Pipe Diameter 73.025 mm | 2.875 in

Mounting Diameter, maximum	1270 mm		50 in
-----------------------------------	---------	--	-------

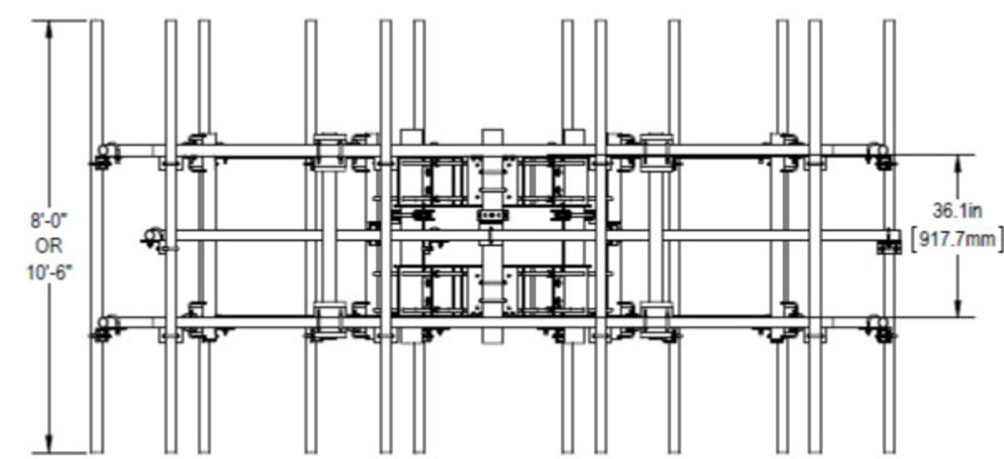
Mounting Diameter, minimum	381 mm 15 in
-----------------------------------	----------------

Pipe Outer Diameter	73.025 mm 2.875 in
----------------------------	----------------------

Stand-off Distance 1,165.86 mm | 45.9 in

Outline Drawing

MCG23HDX-12M-12126



Material Specifications

Material Type Hot dip galvanized steel

Mechanical Specifications

Wind Rating For Specifications, please contact your local ANDREW representative

Wind Rating Test Method TIA/EIA-222

Packaging and Weights

Included Pipe mounts | Plain end pipes (12) | Ring mounts (2) | Sector frames (3) | Stiff arm

Packaging quantity 1

Weight, net 1,324.49 kg | 2920 lb

Regulatory Compliance/Certifications

Agency	Classification
ISO 9001:2015	Designed, manufactured and/or distributed under this quality management system

* Footnotes

Wind Rating BWS—Base Wind Speed; FBC—Florida Building Code