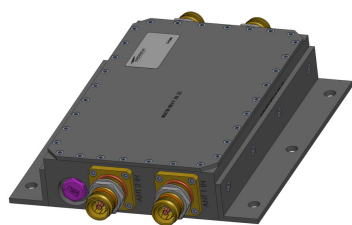


# 7845793-00 | Filter TDD 3500



Passband filter for TDD 3500

## Product Classification

Product Type	Filter
Product Brand	ERA®

## General Specifications

Color	White (RAL 9010)
RF Connector Interface	4.3-10 Female
RF Inputs, quantity	2
RF Outputs, quantity	2
Dimensions	
Height	42 mm   1.654 in
Width	130 mm   5.118 in
Depth	203.5 mm   8.012 in

## Electrical Specifications

Input Power, maximum, specific	5 W CW   50 W Peak
Insertion Loss at Operating Frequency, maximum	1.0 dB @ 3450–3800 MHz   1.3 dB @ 3420–3450 MHz   2.6 dB @ 3410–3420 MHz
Return Loss, minimum	18 dB
Band Rejection at Operating Frequency, minimum	43 dB @ 3000–3400 MHz
Impedance	50 ohm
Operating Frequency Band	3410 – 3800 MHz

## Environmental Specifications

Operating Temperature	-33 °C to +50 °C (-27.4 °F to +122 °F)
Ingress Protection Test Method	IEC 60529:2001, IP68

# 7845793-00 | Filter TDD 3500

---

## Packaging and Weights

**Weight, net** 3 kg | 6.614 lb

## Regulatory Compliance/Certifications

Agency	Classification
CHINA-ROHS	Below maximum concentration value
ROHS	Compliant/Exempted
UK-ROHS	Compliant/Exempted

