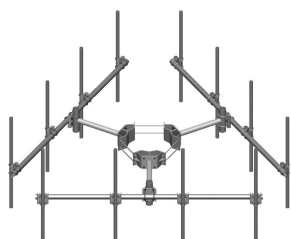


# MC-K10L-B



Monopole Co-location T-Frame Kit, 30 in to 60 in OD, 10 ft face, pipe ordered separately

**OBSOLETE**

This product was discontinued on: August 18, 2022

Replaced By:

MC-K10M-B                      Monopole Co-location T-Frame kit, 12 in to 50 in OD, 10 ft 6 in face, pipe ordered separately

## Product Classification

**Product Type**                                      Monopole T-frame kit

## General Specifications

**Mounting**    Monopole, 762–1524 mm (30–60 in) OD

**Pipe, quantity**                                      0

**Sectors, quantity**                                      3

## Dimensions

**Height**    254 mm | 10 in

**Face Width**                                        3.2 m | 10.5 ft

**Width**    3,200.4 mm | 126 in

**Length**    914.4 mm | 36 in

**Mounting Diameter, maximum**            1524 mm | 60 in

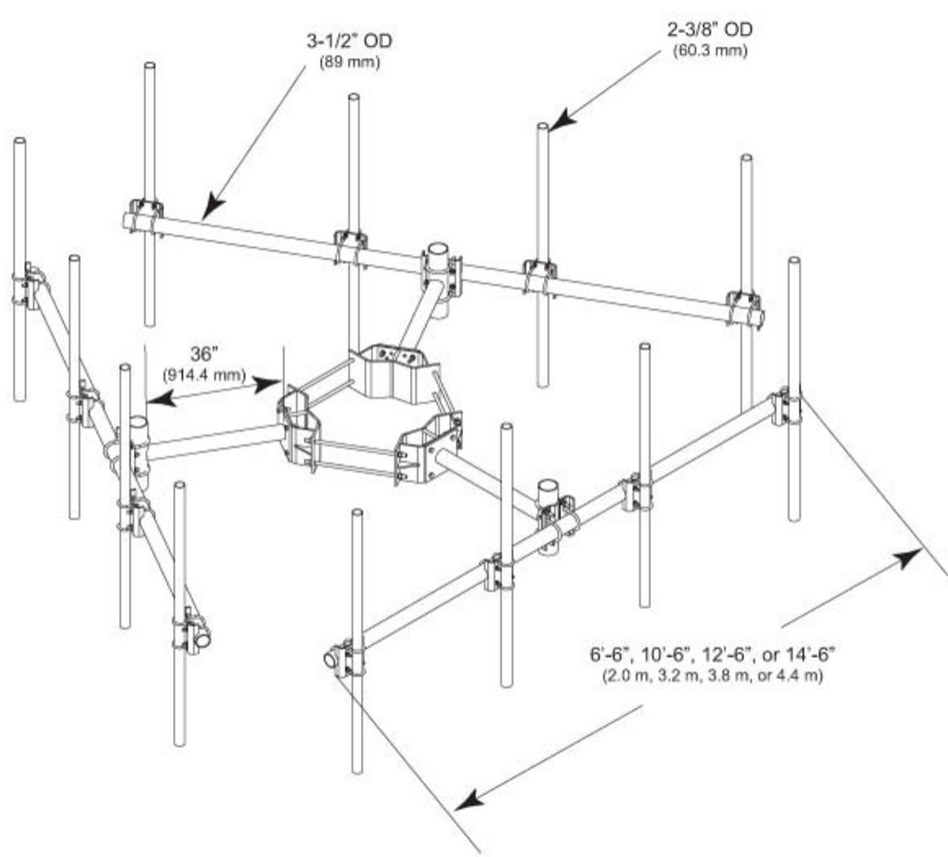
**Mounting Diameter, minimum**            762 mm | 30 in

**Pipe Outer Diameter**                        60.96 mm | 2.4 in

**Stand-off Distance**                            914.4 mm | 36 in

# MC-K10L-B

## Outline Drawing



## Material Specifications

**Material Type** Hot dip galvanized steel

## Mechanical Specifications

**Wind Rating** 120 mph (BWS) at 150 ft AGL | 140 mph (3-second gust) at 150 ft AGL using Exposure D per FBC

**Wind Rating Criteria** Four 72 in x 8 in panel antennas per sector

**Wind Rating Test Method** TIA/EIA-222

## Packaging and Weights

**Included** Cellular pipe frames | Ring mount | Stand-off arms

**Packaging quantity** 1

**Weight, net** 376.89 kg | 830.9 lb

# MC-K10L-B

---

## Regulatory Compliance/Certifications

Agency	Classification
ISO 9001:2015	Designed, manufactured and/or distributed under this quality management system

## Included Products

- MC-RM3060-3 – Universal Ring Mount, 30 in to 60 in OD
- MT-197 – Single Support Arm, 36 in, includes pipe
- MT-216-10NS – Cellular Pipe Frame, 10 ft face

## \* Footnotes

Wind Rating	BWS—Base Wind Speed; FBC—Florida Building Code
-------------	--