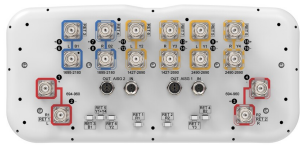


# RRZZHHTT-65A-R7N43



16-port sector antenna, 4x 694–960, 4x 1427–2690, 4x 1695-2180 and 4x 2490-2690 MHz, 65° HPBW, 7x RET

- All Internal RET actuators are connected in "Cascaded SRET" configuration
- Supports re-configurable antenna sharing capability enabling control of the internal RET system using up to two separate RET compatible OEM radios
- Array configuration provides capability for 4T4R (4x MIMO) on Low band and High band
- Retractable tilt indicator rods
- Antenna shape optimized for wind load reduction

## General Specifications

Antenna Type	Sector
Band	Multiband
Grounding Type	RF connector inner conductor and body grounded to reflector and mounting bracket
Performance Note	Outdoor usage
RF Connector Interface	4.3-10 Female
RF Connector Location	Bottom
RF Connector Quantity, high band	0
RF Connector Quantity, mid band	12
RF Connector Quantity, low band	4
RF Connector Quantity, total	16

## Remote Electrical Tilt (RET) Information

RET Hardware	CommRET v2
RET Interface	8-pin DIN Female   8-pin DIN Male
RET Interface, quantity	2 female   2 male
Input Voltage	10–30 Vdc
Internal RET	Low band (2)   Mid band (5)
Power Consumption, active state, maximum	8 W
Power Consumption, idle state, maximum	1 W
Protocol	3GPP/AISG 2.0 (Single RET)

## Dimensions

<b>Width</b>	430 mm		16.929 in
<b>Depth</b>	197 mm		7.756 in
<b>Length</b>	1599 mm		62.953 in
<b>Net Weight, antenna only</b>	33.2 kg		73.193 lb

Array ID	Frequency (MHz)	RF Connector	RET (SRET)	AISG No.	AISG RET UID
R1	694-960	1 - 2	1	AISG1	CPxxxxxxxxxxxxxxxxR1
R2	694-960	3 - 4	2	AISG1	CPxxxxxxxxxxxxxxxxR2
B1	1695-2180	5 - 6	3	AISG1	CPxxxxxxxxxxxxxxxxB1
B2	1695-2180	7 - 8	4	AISG1	CPxxxxxxxxxxxxxxxxB2
Y1	2490-2690	9 - 10	5	AISG1	CPxxxxxxxxxxxxxxxxY1
Y4	2490-2690	15 - 16			
Y2	1427-2690	11 - 12	6	AISG1	CPxxxxxxxxxxxxxxxxY2
Y3	1427-2690	13 - 14	7	AISG1	CPxxxxxxxxxxxxxxxxY3

[illegible]

<b>Impedance</b>	50 ohm
------------------	--------

# RRZZHHTT-65A-R7N43

Operating Frequency Band	1427 – 2690 MHz   1695 – 2180 MHz   2490 – 2690 MHz   694 – 960 MHz
Polarization	±45°
Total Input Power, maximum	1,200 W @ 50 °C

## Electrical Specifications

	R1,R2	R1,R2	R1,R2	Y2,Y3	Y2,Y3	Y2,Y3	Y2,Y3	Y2,Y3	B1,B2	B1,B2	Y1,Y4
Frequency Band, MHz	698–806	790–894	890–960	1427–1518	1695–1995	1920–2300	2300–2500	2490–2690	1695–1995	1920–2180	2490–2690
RF Port	1,2,3,4	1,2,3,4	1,2,3,4	11,12,13,14	11,12,13,14	11,12,13,14	11,12,13,14	11,12,13,14	5,6,7,8	5,6,7,8	9,10,15,16
Beamwidth, Horizontal, degrees	59	56	58	71	68	63	59	56	71	65	61
Beamwidth, Vertical, degrees	13.4	12.1	11.2	7.8	6.2	5.6	5	4.7	6.1	5.6	4.7
Beam Tilt, degrees	2–16	2–16	2–16	2–12	2–12	2–12	2–12	2–12	2–12	2–12	2–12
USLS (First Lobe), dB	14	15	14	12	13	14	16	16	17	16	21
Front-to-Back Ratio at 180°, dB	25	24	25	31	33	33	32	32	31	31	29
Front-to-Back Total Power at 180° ± 30°, dB	18	19	21	23	26	26	27	27	24	24	22
CPR at Boresight, dB	21	19	22	17	19	18	20	18	18	17	17
CPR at Sector, dB	5	7	7	9	5	5	8	3	8	9	7
Isolation, Cross Polarization, dB	26	26	26	26	26	26	26	26	27	27	27
Isolation, Inter-band, dB	26	26	26	26	26	26	26	26	26	26	27
VSWR   Return loss,	1.5   14.0	1.5   14.0	1.5   14.0	1.5   14.0	1.5   14.0	1.5   14.0	1.5   14.0	1.5   14.0	1.5   14.0	1.5   14.0	1.5   14.0



# RRZZHHTT-65A-R7N43

<b>dB</b>											
<b>PIM, 3rd Order, 2 x 20 W, dBc</b>	-153	-153	-153	-153	-153	-153	-153	-153	-153	-153	-153
<b>Input Power per Port at 50°C, maximum, watts</b>	300	300	300	250	250	250	200	200	250	250	200

## Mechanical Specifications

<b>Wind Loading @ Velocity, frontal</b>	376.0 N @ 150 km/h (84.5 lbf @ 150 km/h)
<b>Wind Loading @ Velocity, lateral</b>	203.0 N @ 150 km/h (45.6 lbf @ 150 km/h)
<b>Wind Loading @ Velocity, maximum</b>	594.0 N @ 150 km/h (133.5 lbf @ 150 km/h)
<b>Wind Loading @ Velocity, rear</b>	243.0 N @ 150 km/h (54.6 lbf @ 150 km/h)
<b>Wind Speed, maximum</b>	241 km/h (150 mph)

## Packaging and Weights

<b>Width, packed</b>	530 mm   20.866 in
<b>Depth, packed</b>	349 mm   13.74 in
<b>Length, packed</b>	1771 mm   69.724 in
<b>Weight, gross</b>	43 kg   94.799 lb

## Regulatory Compliance/Certifications

<b>Agency</b>	<b>Classification</b>
CHINA-ROHS	Below maximum concentration value
ISO 9001:2015	Designed, manufactured and/or distributed under this quality management system
REACH-SVHC	Compliant as per SVHC revision on <a href="http://www.commscope.com/ProductCompliance">www.commscope.com/ProductCompliance</a>
ROHS	Compliant
UK-ROHS	Compliant



## Included Products

BSAMNT-3	–	Wide Profile Antenna Downtilt Mounting Kit for 2.4 - 4.5 in (60 - 115 mm) OD round members. Kit contains one scissor top bracket set and one bottom bracket set.
----------	---	--

# RRZZHHTT-65A-R7N43

---

\* Footnotes

**Performance Note**      Severe environmental conditions may degrade optimum performance