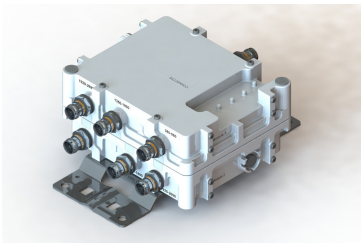


# E14F10P89



Twin Triplexer 380-960/1350-1880/1920-2690, DC/AISG Smart bypass functionality, 4.3-10 connectors

- New 4.3-10 connectors for improved PIM performance and size reduction
- Twin configuration
- DC/AISG SMART bypass functionality

## Product Classification

**Product Type** Triplexer

## General Specifications

**Color** Gray

**Modularity** 2-Twin

**Mounting** Pole | Wall

**Mounting Pipe Hardware** Band clamps (2)

**RF Connector Interface** 4.3-10 Female

## Dimensions

**Height** 103.2 mm | 4.063 in

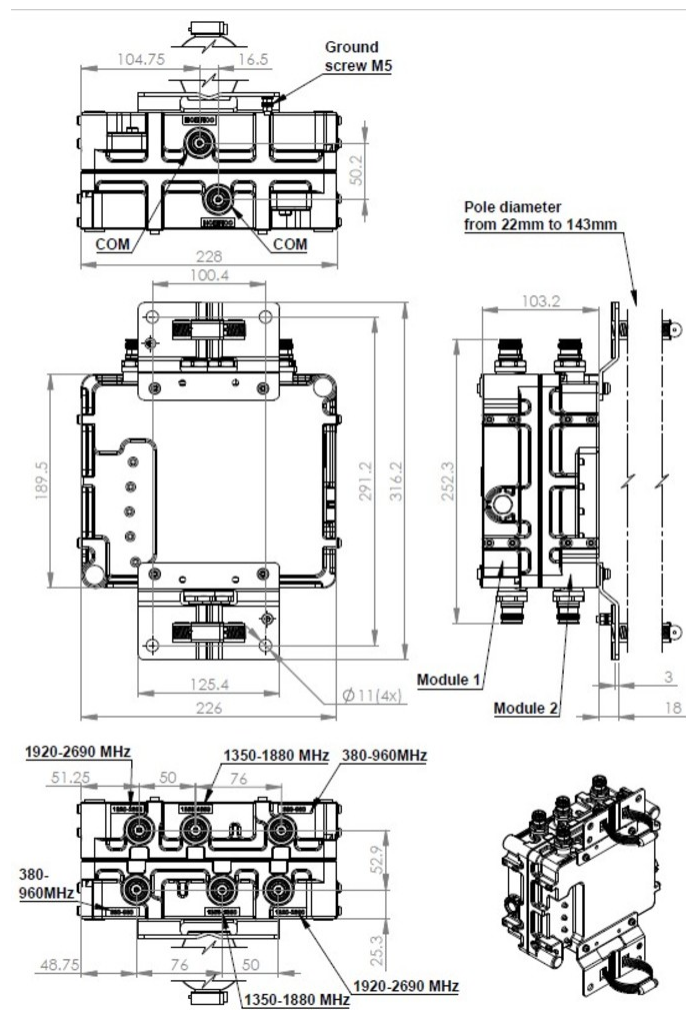
**Width** 226 mm | 8.898 in

**Depth** 189.5 mm | 7.461 in

**Mounting Pipe Diameter Range** 42.6–122 mm

## Outline Drawing

# E14F10P89



## Electrical Specifications

Impedance	50 ohm
Electrical Specifications, dc Power/Alarm	
dc/AISG Pass-through Method	Auto sensing
dc/AISG Pass-through, combiner	Autosensing
dc/AISG Pass-through, demultiplexer	Autosensing
Lightning Surge Current	10 kA
Lightning Surge Current Waveform	8/20 waveform

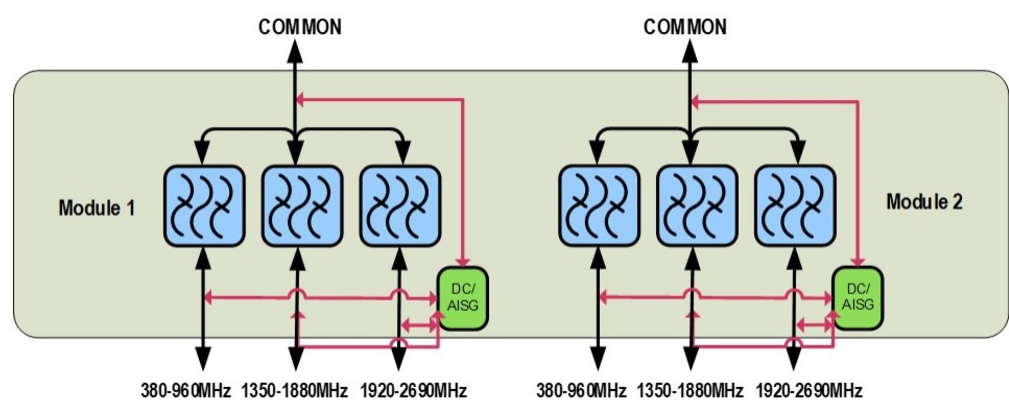
## Electrical Specifications

Sub-module	1   2	1   2	1   2
------------	-------	-------	-------

# E14F10P89

Branch	1	2	3
Port Designation	380-960	1350-1880	1920-2690
Electrical Specifications, Band Pass			
Frequency Range, MHz	698–960	1350–1880	1920–2690
Insertion Loss, typical, dB	0.25	0.35	0.35
Return Loss, typical, dB	20	20	20
Isolation, typical, dB	52	52	52
Input Power, RMS, maximum, W	200	200	200
Input Power, PEP, maximum, W	2000	2000	2000
3rd Order PIM, typical, dBc	-162	-162	-162
3rd Order PIM Test Method	Two +43 dBm carriers	Two +43 dBm carriers	Two +43 dBm carriers

## Block Diagram



## Environmental Specifications

Operating Temperature	-40 °C to +65 °C (-40 °F to +149 °F)
Corrosion Test Method	IEC 60068-2-11, 30 days
Environmental Test Method	ETSI EN 300 019-1-4
Ingress Protection Test Method	IEC 60529:2001, IP67

## Packaging and Weights

Included	Mounting hardware
Volume	4.45 L
Weight, net	6.5 kg   14.33 lb
Weight, without mounting hardware	6 kg   13.228 lb

E14F10P89

---