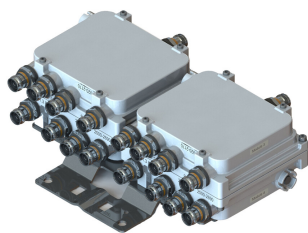


E14F15P32



Ultra Compact Quad Quadplexer 1325-1880/1920-2170/2300-2400 /2500-2690 MHz, with 4.3-10 connectors

- Industry leading PIM performance
- Suitable for feeders cables reduction
- New 4.3-10 connectors for improved PIM performance and size reduction
- dc/AISG blocking on all ports

Product Classification

Product Type Quadplexer

General Specifications

Color Gray

Modularity 4-Quad

Mounting Pole | Wall

Mounting Pipe Hardware Band clamps (2)

RF Connector Interface 4.3-10 Female

Dimensions

Height 88 mm | 3.465 in

Width 345 mm | 13.583 in

Depth 151 mm | 5.945 in

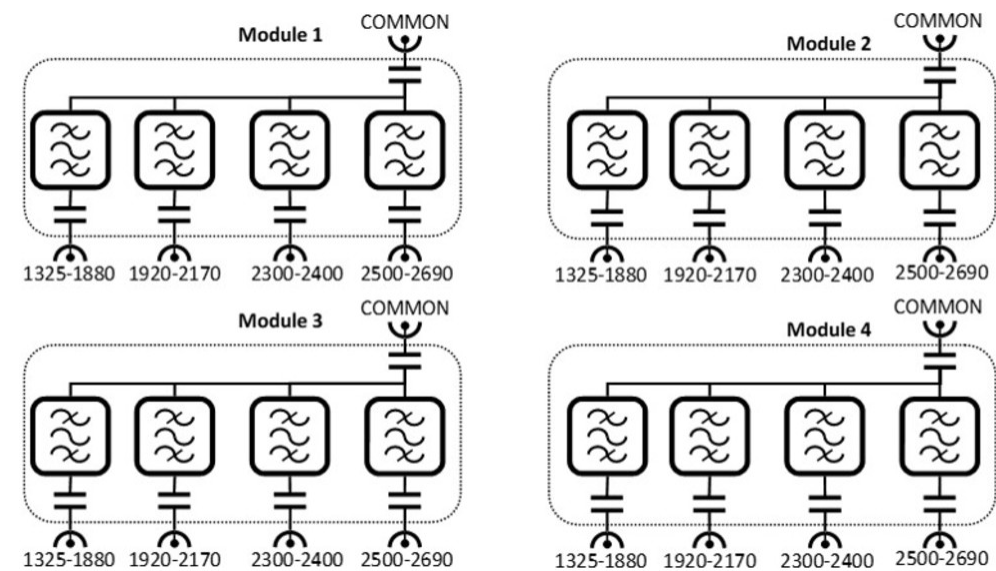
Mounting Pipe Diameter Range 42.6–122 mm

Outline Drawing

E14F15P32

	1880MHz	2170MHz	2400MHz	2690MHz
Electrical Specifications, Band Pass				
Frequency Range, MHz	1350–1525 1710–1880	1920–2170	2300–2400	2500–2690
Insertion Loss, typical, dB	0.3	0.3	0.3	0.3
Return Loss, typical, dB	20	20	20	20
Isolation, typical, dB	37	37	37	37
Input Power, RMS, maximum, W	100	100	100	100
Input Power, PEP, maximum, W	1000	1000	1000	1000
3rd Order PIM, typical, dBc	-163	-163	-163	-163
3rd Order PIM Test Method	Two +43 dBm carriers	Two +43 dBm carriers	Two +43 dBm carriers	Two +43 dBm carriers

Block Diagram



Mechanical Specifications

Wind Speed, maximum	240 km/h (149 mph)
---------------------	--------------------

Environmental Specifications

Operating Temperature	-40 °C to +65 °C (-40 °F to +149 °F)
Corrosion Test Method	IEC 60068-2-11, 30 days
Environmental Test Method	ETSI EN 300 019-1-4
Ingress Protection Test Method	IEC 60529:2001, IP67

E14F15P32

Packaging and Weights

Included	Mounting hardware
Volume	4.6 L
Weight, with mounting hardware	6.7 kg 14.771 lb
Weight, without mounting hardware	5.8 kg 12.787 lb