

4

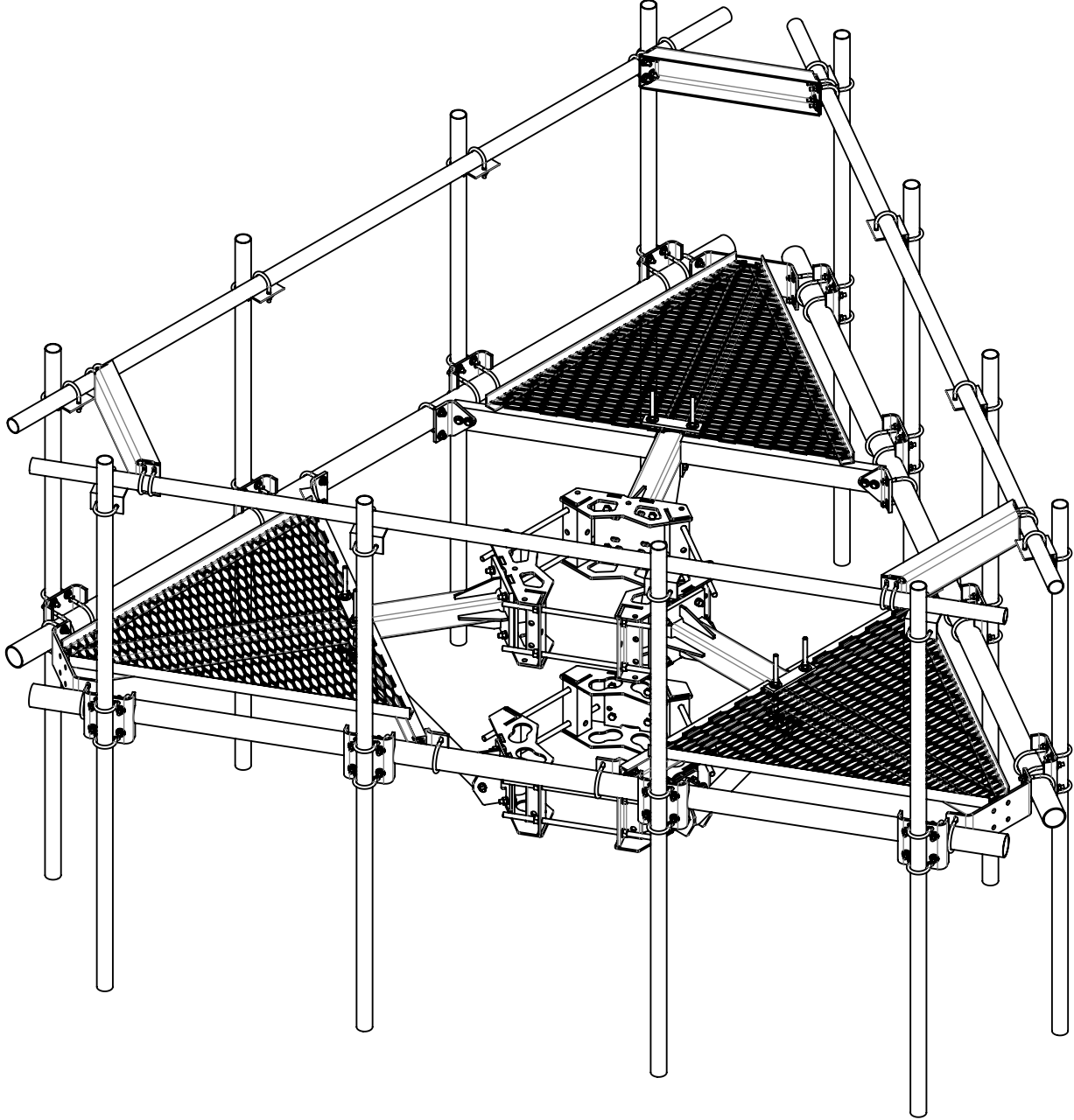
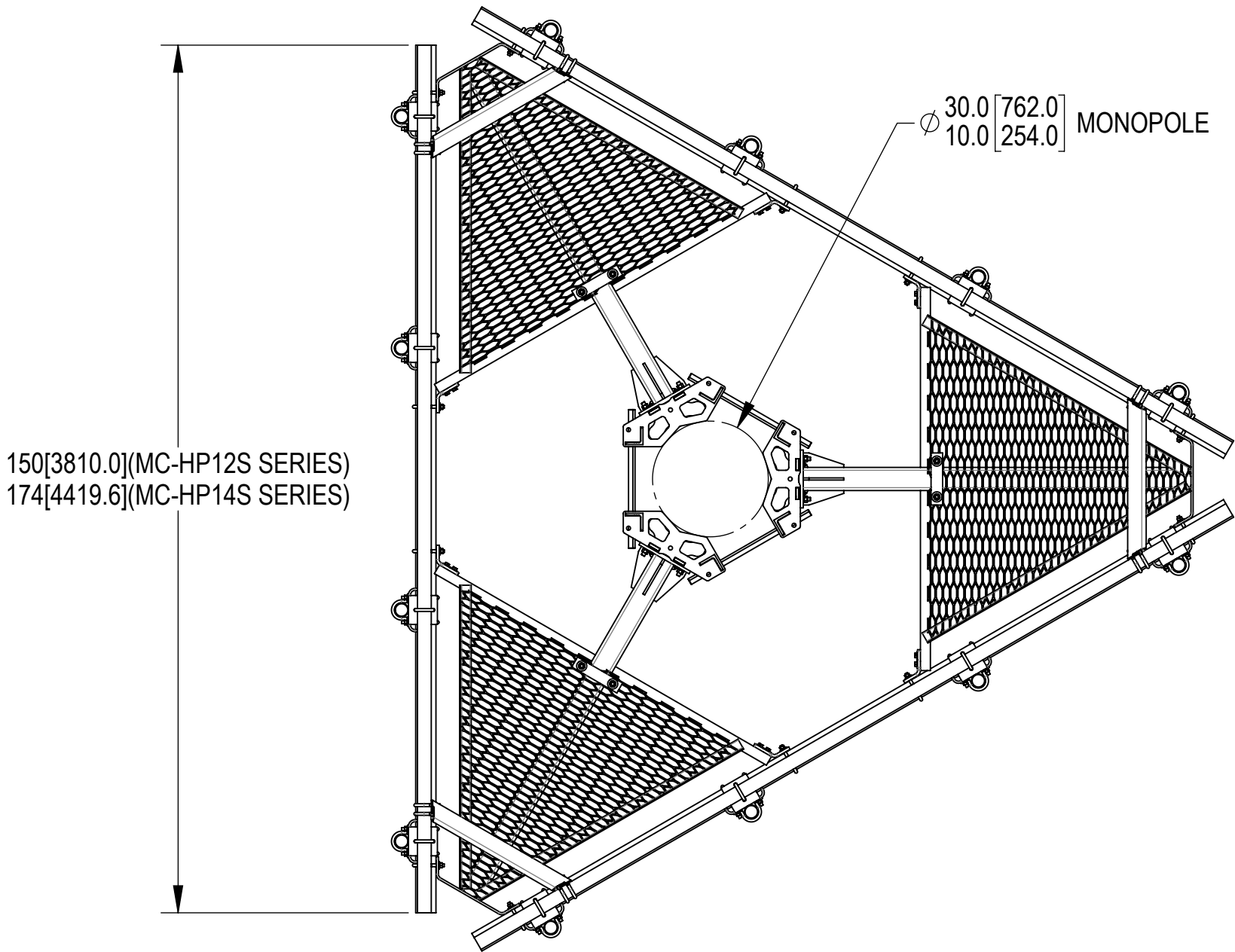
3

2

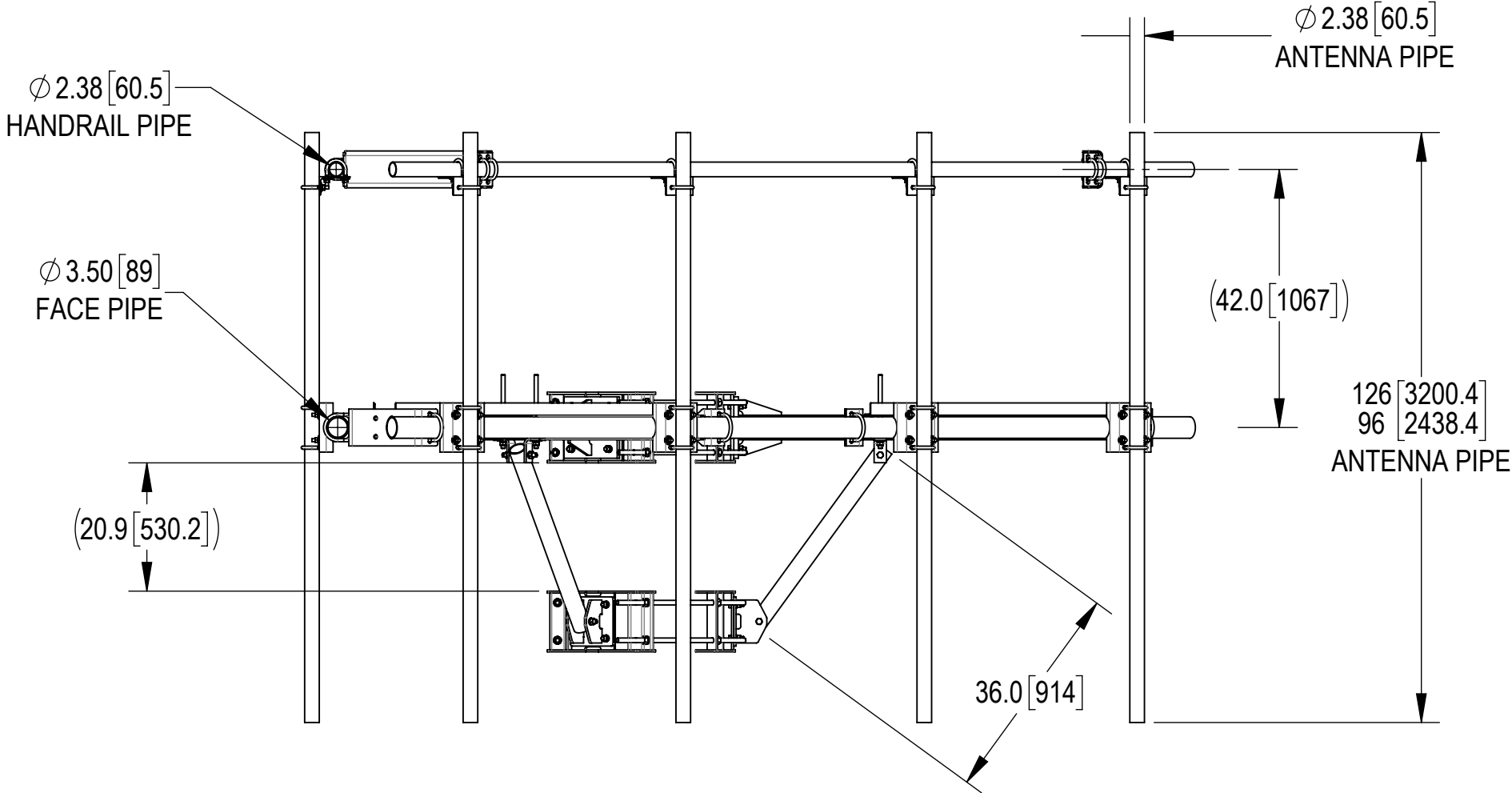
1


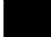



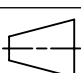
- 1.0 GENERAL NOTES
- 1.1 ALL METRIC DIMENSIONS ARE IN BRACKETS [X. X]
- 1.2 FOR PATENT INFO: <https://www.adwpat.com>
- 2.0 DESIGN NOTES
- 2.1 ANY HAZARDS OR OBSTRUCTIONS TO THE CLIMBING FACILITY AND SAFETY CLIMB MUST BE IDENTIFIED PRIOR TO INSTALLING THE APPURTENANCE. ADDITIONAL PRODUCTS MAY BE REQUIRED TO MAINTAIN THE INTEGRITY OF THE SAFETY CLIMB. DURING INSTALLATION, TEMPORARY AND/OR PERMANENT PRECAUTIONARY MEASURES SHOULD BE TAKEN TO PRESERVE THE CLIMBING FACILITY AND/OR SAFETY CLIMB.
- 2.2 FITS MONOPOLES 10"-30" O.D.
- 3.0 MANUFACTURING/SPECIAL REQUIREMENTS
- 3.1 TIGHTEN ALL BOLTS SECURING FLAT PLATES BY THE TURN-OF-NUT METHOD. TIGHTEN ALL U-BOLTS USING TURN-OF-NUT METHOD WITH ATTENTION TO LEAVE EQUAL DISTANCE AND EQUAL FORCE ON EACH LEG OF THE U-BOLT.
- 4.0 TEST
- 5.0 PACKAGING
- 5.1 PACKAGING SHALL MEET ANDREW REQUIREMENTS PER DOCUMENT IS-PL-3005
- 5.2 PRINTED DOCUMENT TO BE PLACED INSIDE POLYBAG AND THEN IN SHIPPING CONTAINER
- 5.3 EXTRA HARDWARE MAY BE SUPPLIED, BAGGED AND SHIPPED

REVISIONS			
REV.	DESCRIPTION	DATE	APPROVED
G	SIMPLIFIED SERIES DRAWING	LL 1090 13MAY25	BA1025 50102553AMO



MC-HP12S-12-96 SHOWN FOR REFERENCE  
(SEE TABLE 1 FOR ALL CONFIGURATIONS)



<div><b>ANDREW</b>® an Amphenol company</div>									
TOLERANCES					SAP MATERIAL MASTER				
1 PLACE .X[X] ± .12[3.0]			3 PLACE .XXX[X] ± 0.030[0.76]		<b>SEE TABLE 1</b>				
2 PLACE .XX[X] ± .06[1.5]			ANGLES ± 2°						
FINISH				MATERIAL					
UNLESS OTHERWISE SPECIFIED DIMENSIONS ARE IN INCHES INTERPRET PER ANSI Y 14.3M-1994		NAME	DATE	<b>MP,PLF,3S,12/14'FP,W/HR SERIES</b>					
	CE	MSM	23MAR15						
	RW	YMENG	05/13/2025						
				<b>MC-HP12S(14S) SERIES</b>					
	AD	YC1015	05/14/2025						
	RE	YMENG	05/22/2025						
	ECN 50102553AMO			SCALE <b>1:25</b>	DOCUMENT NO.				
SIZE	Auth Group		INSL	MODEL		DRAWING			SHEET 1 OF 2
<b>C</b>				VERSION 03	STATUS RE	REVISION D	VERSION 02	STATUS RE	

PART NUMBERS, WEIGHTS, & EPA

TABLE 1: CONFIGURATIONS

PART NUMBER	DESCRIPTION	WEIGHT (LBS)	(EPA)A (FT^2)*	(EPA)A 1/2" ICE THICKNESS (FT^2)*	ANTENNA PIPES	INCLUDED PARTS								
						MCHP1214SHK	MTC360714LSB	MTC360714SSB	MCCP12BPB	MCCP1296PB	MCCP12126PB	MCCP14BPB	MTC3607LSB	MCCP14126SB
MC-HP12S-B	MP,PLF,3S,12'FP,NOAP,W/HR	1607.18	28.75	35.78	-	1	1	-	1	-	-	-	-	-
MC-HP12S-12-96	MP,PLF,3S,12'FP,(12)096"AP,W/HR	1886.25			12	1	1	-	-	1	-	-	-	-
MC-HP12S-12-126	MP,PLF,3S,12'FP,(12)126"AP,W/HR	1972.64			12	1	1	-	-	-	1	-	-	-
MC-HP14S-B	MP,PLF,3S,14'FP,NOAP,W/HR	1687.22	30.70	38.37	-	1	-	1	-	-	-	1	-	-
MC-HP14S-12-96	MP,PLF,3S,14'FP,(12)096"AP,W/HR	1966.28			12	1	-	1	-	-	-	-	1	-
MC-HP14S-12-126	MP,PLF,3S,14'FP,(12)126"AP,W/HR	2052.68			12	1	-	1	-	-	-	-	-	1

\* (EPA)A DOES NOT INCLUDE ANTENNA PIPES AND MOUNTING HARDWARE. IF DESIRED, ADD ANTENNA PIPE PER TABLE 2

TABLE 2: EPA OF EACH ANTENNA PIPE

ANTENNA PIPE	(EPA)A (FT^2)	(EPA)A W/ 1/2" ICE THICKNESS (FT^2)
2-3/8" X 96"	1.52	2.16
2-3/8" X 126"	2.00	2.84

NOTE:  
1. ANTENNA PIPES ARE CONSIDERED SEPARATELY.  
2. KA FACTOR OF 3-SECTOR EPA INCLUDED.  
3. COMBINE THE ASSOCIATED EPA VALUES IN THE TABLES ABOVE TO DETERMINE THE EPA OF A MOUNT MODEL WITH A LISTED MOUNT PIPE CONFIGURATION.  
FOR EXAMPLE, MC-HP12S-12-96 HAS A EPA(A) OF 28.75 FT2 WITH NO ICE PLUS 12 ANTENNA PIPES WITH A EPA(A) OF 12X1.52=18.24 FT2 WITH NO ICE.  
SO, THE TOTAL EPA(A) OF 46.99 FT2 FOR THE MC-HP12S-12-96.



TITLE  
MP,PLF,3S,12/14'FP,W/HR SERIES

SIZE <b>C</b>	SCALE <b>1:20</b>	DOCUMENT NO. MC-HP12S(14S) SERIES		
------------------	----------------------	--------------------------------------	--	--



DRAWING			SHEET 2 OF 2
VERSION	STATUS	REVISION	
02	RE	<b>G</b>	

Confidential