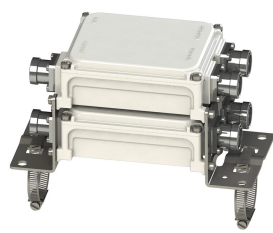


# E11F02P51



Twin Diplexer, 1695-2180/2300-2690 MHz, dc bypass on 1695-2180 ports

- Industry leading PIM performance
- Twin configuration

**OBSOLETE**

This product was discontinued on: December 30, 2024

Replaced By:

E14F06P48      Twin Diplexer, 1350-2200 / 2300-2700 MHz, dc bypass all ports, 4.3-10 connectors

## Product Classification

**Product Type**      Diplexer

## General Specifications

**Product Family**      CBC1726

**Color**      Gray

**Common Port Label**      COMM

**Modularity**      2-Twin

**Mounting**      Pole | Wall

**Mounting Pipe Hardware**      Band clamps (2)

**RF Connector Interface**      7-16 DIN Female

**RF Connector Interface Body Style**      Long neck

## Dimensions

**Height**      152.4 mm | 6 in

**Width**      123 mm | 4.843 in

**Depth**      119 mm | 4.685 in

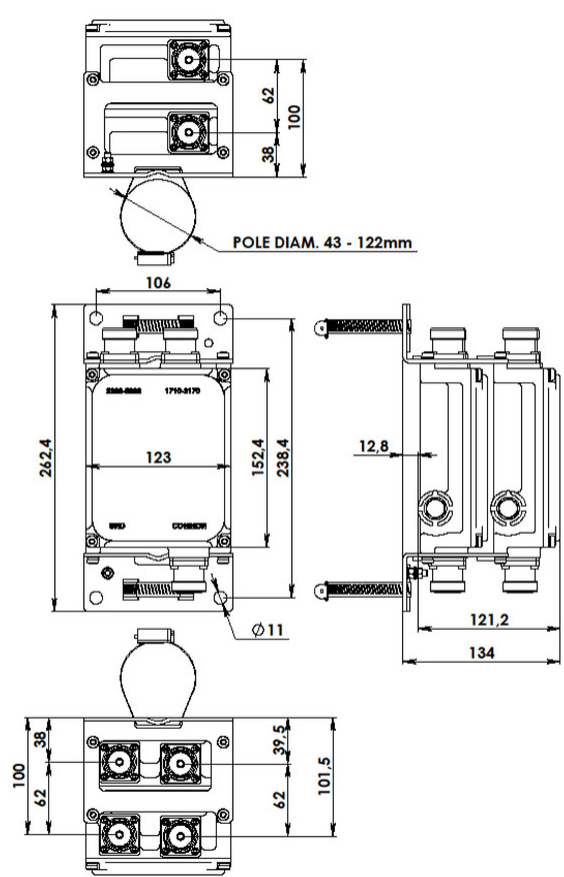
**RF Connector Length**      25 mm | 0.984 in

**Ground Screw Diameter**      6 mm | 0.236 in

**Mounting Pipe Diameter Range**      42.6–122 mm

# E11F02P51

## Outline Drawing



## Electrical Specifications

<b>Impedance</b>	50 ohm
<b>License Band, Band Pass</b>	AWS 1700   DCS 1800   IMT 2100   IMT 2600   PCS 1900   WCS 2300

## Electrical Specifications, dc Power/Alarm

<b>dc/AISG Pass-through, combiner</b>	Branch 1
<b>dc/AISG Pass-through, demultiplexer</b>	Branch 1
<b>Lightning Surge Current</b>	3 kA
<b>Lightning Surge Current Waveform</b>	10/350 waveform

# E11F02P51

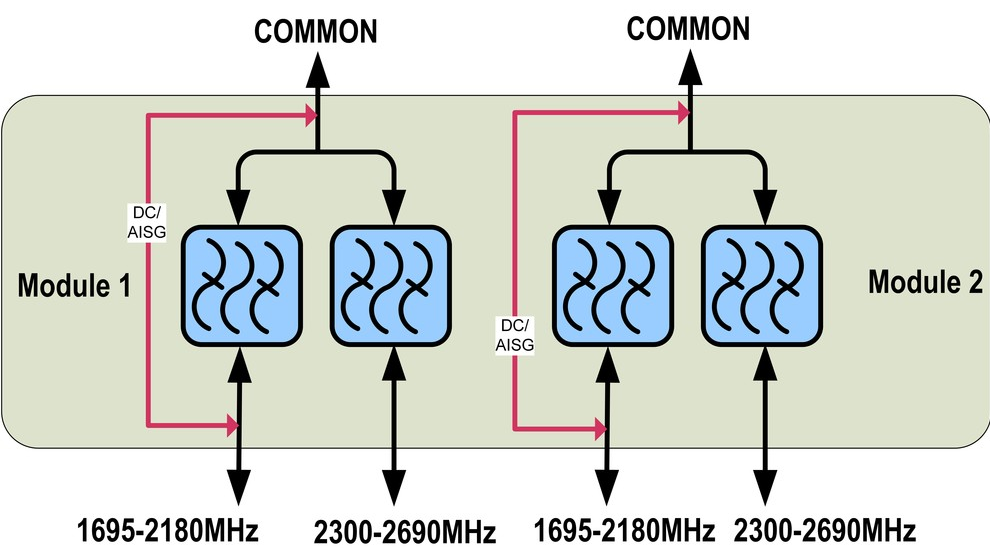
## Electrical Specifications

Sub-module	1   2	1   2
Branch	1	2
Port Designation	1695-2180	2300-2690
License Band	AWS 1700, Band Pass DCS 1800, Band Pass IMT 2100, Band Pass PCS 1900, Band Pass	IMT 2600, Band Pass WCS 2300, Band Pass

## Electrical Specifications, Band Pass

Frequency Range, MHz	1695–2180	2300–2690
Insertion Loss, typical, dB	0.3	0.35
Total Group Delay, maximum, ns	30	30
Return Loss, minimum, dB	18	18
Return Loss, typical, dB	20	20
Isolation, minimum, dB	50	50
Input Power, PEP, maximum, W	3500	3500
3rd Order PIM, typical, dBc	-160	-160
3rd Order PIM Test Method	Two +43 dBm carriers	Two +43 dBm carriers

## Block Diagram



## Environmental Specifications

# E11F02P51

---

<b>Operating Temperature</b>	-40 °C to +60 °C (-40 °F to +140 °F)
<b>Relative Humidity</b>	Up to 100%
<b>Corrosion Test Method</b>	IEC 60068-2-11, 30 days
<b>Ingress Protection Test Method</b>	IEC 60529:2001, IP67

## Packaging and Weights

<b>Included</b>	Mounting hardware
<b>Volume</b>	2.3 L
<b>Weight, net</b>	3.8 kg   8.378 lb