

RRV4-65D-R6-V3



12-port sector antenna, 4x 694–960 and 8x 1695–2690 MHz, 65° HPBW, 6x RET

- All Internal RET actuators are connected in “Cascaded SRET” configuration
- Supports re-configurable antenna sharing capability enabling control of the internal RET system using up to two separate RET compatible OEM radios
- Site sharing preset: R1, Y1, Y3 assigned to AISG2 / R2, Y2, Y4 assigned to AISG1

This product will be discontinued on: December 31, 2025

General Specifications

| | |
|----------------------------------|--|
| Antenna Type | Sector |
| Band | Multiband |
| Grounding Type | RF connector inner conductor and body grounded to reflector and mounting bracket |
| Performance Note | Outdoor usage |
| Radome Material | Fiberglass, UV resistant |
| Radiator Material | Aluminum Low loss circuit board |
| Reflector Material | Aluminum |
| RF Connector Interface | 4.3-10 Female |
| RF Connector Location | Bottom |
| RF Connector Quantity, high band | 8 |
| RF Connector Quantity, mid band | 0 |
| RF Connector Quantity, low band | 4 |
| RF Connector Quantity, total | 12 |

Remote Electrical Tilt (RET) Information

| | |
|--|-----------------------------------|
| RET Hardware | CommRET v2 |
| RET Interface | 8-pin DIN Female 8-pin DIN Male |
| RET Interface, quantity | 2 female 2 male |
| Input Voltage | 10–30 Vdc |
| Internal RET | High band (4) Low band (2) |
| Power Consumption, idle state, maximum | 1 W |

RRV4-65D-R6-V3

| | |
|---|----------------------------|
| Power Consumption, normal conditions, maximum | 8 W |
| Protocol | 3GPP/AISG 2.0 (Single RET) |
| Dimensions | |
| Width | 498 mm 19.606 in |
| Depth | 197 mm 7.756 in |
| Length | 2688 mm 105.827 in |
| Net Weight, without mounting kit | 48 kg 105.822 lb |

Array Layout

Y2

Y4

Y1

Y3

R1

R2

Left

Right

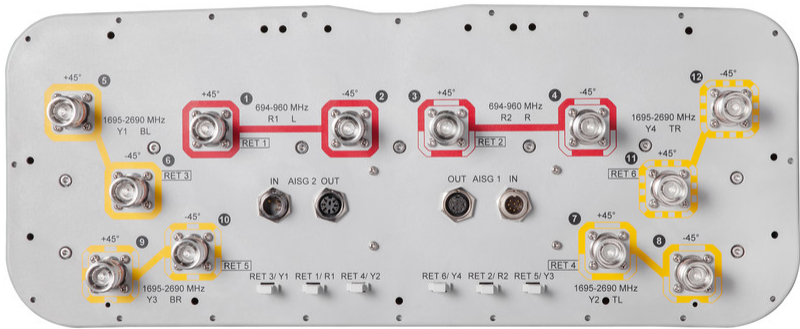
Bottom

| Array | Freq (MHz) | Conns | RET (SRET) | AISG RET UID |
|-------|------------|-------|---------------|--------------------|
| R1 | 694-960 | 1-2 | 1 | CPxxxxxxxxxxxxxxR1 |
| R2 | 694-960 | 3-4 | 2 | CPxxxxxxxxxxxxxxR2 |
| Y1 | 1695-2690 | 5-6 | 3 | CPxxxxxxxxxxxxxxY1 |
| Y2 | 1695-2690 | 7-8 | 4 | CPxxxxxxxxxxxxxxY2 |
| Y3 | 1695-2690 | 9-10 | 5 | CPxxxxxxxxxxxxxxY3 |
| Y4 | 1695-2690 | 11-12 | 6 | CPxxxxxxxxxxxxxxY4 |

(Sizes of colored boxes are not true depictions of array sizes)

Port Configuration

RRV4-65D-R6-V3



Electrical Specifications

| | |
|----------------------------|---------------------------------|
| Impedance | 50 ohm |
| Operating Frequency Band | 1695 – 2690 MHz 694 – 960 MHz |
| Polarization | ±45° |
| Total Input Power, maximum | 900 W @ 50 °C |

Electrical Specifications

| Frequency Band, MHz | 694–790 | 790–890 | 890–960 | 1695–1880 | 1850–1990 | 1920–2180 | 2300–2500 | 2500–2690 |
|-----------------------------------|------------|------------|------------|------------|------------|------------|------------|------------|
| Gain, dBi | 16.2 | 16.7 | 16.8 | 17.3 | 17.8 | 18.1 | 18.3 | 18 |
| Beamwidth, Horizontal, degrees | 71 | 65 | 61 | 60 | 55 | 57 | 63 | 69 |
| Beamwidth, Vertical, degrees | 8.4 | 7.5 | 6.9 | 7.6 | 7 | 6.6 | 5.7 | 5.4 |
| Beam Tilt, degrees | 2–12 | 2–12 | 2–12 | 2–12 | 2–12 | 2–12 | 2–12 | 2–12 |
| USLS (First Lobe), dB | 13 | 15 | 15 | 19 | 19 | 19 | 17 | 15 |
| Front-to-Back Ratio at 180°, dB | 33 | 32 | 34 | 35 | 37 | 37 | 34 | 31 |
| Isolation, Cross Polarization, dB | 28 | 28 | 28 | 28 | 28 | 28 | 28 | 28 |
| Isolation, Inter-band, dB | 28 | 28 | 28 | 28 | 28 | 28 | 28 | 28 |
| VSWR Return loss, dB | 1.5 14.0 | 1.5 14.0 | 1.5 14.0 | 1.5 14.0 | 1.5 14.0 | 1.5 14.0 | 1.5 14.0 | 1.5 14.0 |

RRV4-65D-R6-V3

| | | | | | | | | |
|--|------|------|------|------|------|------|------|------|
| PIM, 3rd Order, 2 x 20 W, dBc | -150 | -150 | -150 | -150 | -150 | -150 | -150 | -150 |
| Input Power per Port at 50°C, maximum, watts | 300 | 300 | 300 | 250 | 250 | 250 | 250 | 200 |

Mechanical Specifications

| | |
|--|---|
| Effective Projective Area (EPA), frontal | 1 m² 10.764 ft² |
| Effective Projective Area (EPA), lateral | 0.35 m² 3.767 ft² |
| Mechanical Tilt Range | 0°–12° |
| Wind Loading @ Velocity, frontal | 1,070.0 N @ 150 km/h (240.5 lbf @ 150 km/h) |
| Wind Loading @ Velocity, lateral | 375.0 N @ 150 km/h (84.3 lbf @ 150 km/h) |
| Wind Loading @ Velocity, maximum | 1,385.0 N @ 150 km/h (311.4 lbf @ 150 km/h) |
| Wind Loading @ Velocity, rear | 880.0 N @ 150 km/h (197.8 lbf @ 150 km/h) |
| Wind Speed, maximum | 241 km/h (150 mph) |

Packaging and Weights

| | |
|----------------|----------------------|
| Width, packed | 565 mm 22.244 in |
| Depth, packed | 309 mm 12.165 in |
| Length, packed | 2935 mm 115.551 in |
| Weight, gross | 68.9 kg 151.898 lb |

Regulatory Compliance/Certifications

| Agency | Classification |
|------------|-----------------------------------|
| CHINA-ROHS | Above maximum concentration value |
| ROHS | Compliant/Exempted |
| UK-ROHS | Compliant/Exempted |



Included Products

| | | |
|-----------|---|--|
| BSAMNT-4 | – | Wide Profile Antenna Downtilt Mounting Kit for 2.4 - 4.5 in (60 - 115 mm) OD round members. Kit contains one scissor top bracket set and one bottom bracket set. |
| BSAMNT-M4 | – | Middle Downtilt Mounting Kit for Long Antennas for 2.4 - 4.5 in (60 - 115 mm) OD round members. Kit contains one scissor bracket set. |

* Footnotes

| | |
|------------------|---|
| Performance Note | Severe environmental conditions may degrade optimum performance |
|------------------|---|

