

LDXX-6516DS-VTM



4-port sector antenna, 4x 790–960 MHz, 65° HPBW, RET compatible

- Engineered to provide wideband capability to support “Digital Dividend” band applications, future ready
- Same physical size as existing 800/900 MHz antennas for easy site zoning
- Proven core design technology, with over 1,000,000 similar antennas deployed

OBSOLETE

This product was discontinued on: **March 31, 2023**

Replaced By:

4P-4L-C2

4-port sector antenna, 4x 694–960 MHz, 65° HPBW, 2x RET

General Specifications

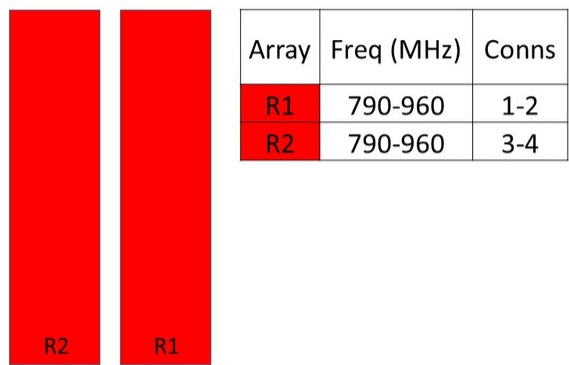
Antenna Type	Sector
Band	Single band
Color	Light Gray (RAL 7035)
Grounding Type	RF connector inner conductor and body grounded to reflector and mounting bracket
Performance Note	Outdoor usage
Radome Material	Fiberglass, UV resistant
Radiator Material	Aluminum
RF Connector Interface	7-16 DIN Female
RF Connector Location	Bottom
RF Connector Quantity, high band	0
RF Connector Quantity, mid band	0
RF Connector Quantity, low band	4
RF Connector Quantity, total	4

Dimensions

Width	549 mm 21.614 in
Depth	165 mm 6.496 in
Length	2567 mm 101.063 in
Net Weight, without mounting kit	32.1 kg 70.768 lb

LDXX-6516DS-VTM

Array Layout



Bottom
(Sizes of colored boxes are not true depictions of array sizes)

Electrical Specifications

Impedance	50 ohm
Operating Frequency Band	790 – 960 MHz
Polarization	±45°

Electrical Specifications

Frequency Band, MHz	790–862	824–894	870–960
Gain, dBi	17.5	17.9	17.5
Beamwidth, Horizontal, degrees	70	67	63.5
Beamwidth, Vertical, degrees	7.9	7.5	7.1
Beam Tilt, degrees	0–8	0–8	0–8
USLS (First Lobe), dB	17	17	17
Front-to-Back Ratio at 180°, dB	30	30	30
CPR at Boresight, dB	24	24	25
CPR at Sector, dB	16	16	12
Isolation, Cross Polarization, dB	30	30	30
Isolation, Cross Polarization, port to port, dB	30	30	30
VSWR Return loss, dB	1.4 15.6	1.4 15.6	1.4 15.6
PIM, 3rd Order, 2 x 20 W, dBc	-150	-150	-150

LDCX-6516DS-VTM

Input Power per Port, maximum, watts	350	350	350
--------------------------------------	-----	-----	-----

Mechanical Specifications

Wind Loading @ Velocity, frontal	1,436.0 N @ 150 km/h (322.8 lbf @ 150 km/h)
Wind Loading @ Velocity, lateral	298.0 N @ 150 km/h (67.0 lbf @ 150 km/h)
Wind Loading @ Velocity, rear	2,210.0 N @ 150 km/h (496.8 lbf @ 150 km/h)
Wind Speed, maximum	241 km/h (150 mph)

Packaging and Weights

Width, packed	659 mm 25.945 in
Depth, packed	275 mm 10.827 in
Length, packed	2883 mm 113.504 in
Weight, gross	53.1 kg 117.065 lb

Regulatory Compliance/Certifications

Agency	Classification
CE	Compliant with the relevant CE product directives
CHINA-ROHS	Below maximum concentration value
ISO 9001:2015	Designed, manufactured and/or distributed under this quality management system
REACH-SVHC	Compliant as per SVHC revision on www.andrew.com/ProductCompliance
ROHS	Compliant
UK-ROHS	Compliant



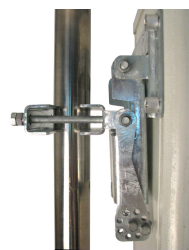
Included Products

BSAMNT-3	–	Wide Profile Antenna Downtilt Mounting Kit for 2.4 - 4.5 in (60 - 115 mm) OD round members. Kit contains one scissor top bracket set and one bottom bracket set.
----------	---	--

* Footnotes

Performance Note	Severe environmental conditions may degrade optimum performance
------------------	---

BSAMNT-3



Wide Profile Antenna Downtilt Mounting Kit for 2.4 - 4.5 in (60 - 115 mm) OD round members. Kit contains one scissor top bracket set and one bottom bracket set.

Product Classification

Product Type Downtilt mounting kit

General Specifications

Application Outdoor

Color Silver

Dimensions

Compatible Diameter, maximum 115 mm | 4.528 in

Compatible Diameter, minimum 60 mm | 2.362 in

Weight, net 6.2 kg | 13.669 lb

Material Specifications

Material Type Galvanized steel

Packaging and Weights

Included Brackets | Hardware

Packaging quantity 1

Weight, gross 6.4 kg | 14.11 lb

Regulatory Compliance/Certifications

Agency	Classification
CE	Compliant with the relevant CE product directives
CHINA-ROHS	Below maximum concentration value
ISO 9001:2015	Designed, manufactured and/or distributed under this quality management system
REACH-SVHC	Compliant as per SVHC revision on www.andrew.com/ProductCompliance
ROHS	Compliant
UK-ROHS	Compliant

