



# **HELIAX<sup>®</sup> COAX PRODUCT SELECTION GUIDE**

## EUROPE

Table of Contents

50 Ohm Coaxial Cables .....3

50 Ohm Connectors .....4

Prep Tool Blade Kit Replacements .....7

Adapters .....8

Outdoor Jumpers .....9

Indoor Jumpers .....10

Outdoor Clusters .....10

Protective Cap Kits .....11

Surge Arrestors .....12

Application PIM Guard .....13

PIM Guard Components .....14

PIM Guard Antenna and RRU Cable Support Brackets .....15

Multi Cable Grommets .....16

Universal Barrel Cushion Grommets .....17

Hangers .....18

KwikClamp Hangers .....19

SHK Hangers .....20

Kwik Clamps For C-Rail Support .....20

DHK Hangers .....21

CLICK Hangers .....21

Hardware Kits .....22

Grounding Kits .....23

Installation Accessories .....24

Cable Support Mounts for Hoisting Grips .....25

Cable Entry Boots / Cushions .....26



**Simplify cell site connectivity  
with HELIAX solutions**

As 5G ramps up, antenna-radio connections are growing more complex. With over 85 years of experience, HELIAX keeps evolving to address new outdoor wireless connectivity challenges—new designs ease deployment, boost quality even in the harshest environments, and optimize total cost of ownership. Fueled by input from customers and ANDREW's commitment, HELIAX will continue to adapt and lead.

# COAXIAL CABLE PRODUCTS

## 50 OHM COAXIAL CABLES

### Ordering Information

Description	Cable Size	ANDREW Material ID	Flame retardant	Low VSWR Cable
50 Ohm Coaxial Cables, Corrugated Copper				
HELIAX Superflexible Low Density Foam Coaxial Cable Black, PE Jacket	1/4 in.	FSJ1-50A	FSJ1RK-50B	
HELIAX Superflexible Foam Coaxial Cable Black, PE Jacket	3/8 in.	FSJ2-50	FSJ2RK-50	
	1/2 in.	FSJ4-50B	FSJ4RK-50B	FSJ4P-50B-42 FSJ4RKP-50B-42-A
HELIAX Low Density Foam Coaxial Cable Black, PE Jacket	3/8 in.	LDF2-50	LDF2RK-50	
	1/2 in.	LDF4-50A	LDF4RK-50A	LDF4P-50A-42 LDF4RKP-50A-42
Andrew Virtual Air™ Coaxial Cable Black, PE Jacket	7/8 in.	AVA5-50		AVA5P-50-42
		AVA5-50FX	AVA5RK-50FX	
	1-1/4 in.	AVA6-50	AVA6RK-50	AVA6P-50-42
	1-5/8 in.	AVA7-50	AVA7RK-50	AVA7P-50-42
HELIAX Low Loss Flexible Aluminum Coaxial Cable, corrugated aluminum, black PE jacket	7/8 in.	AL5-50		

\* Corrugated aluminum

\*\* Tested for C-Band



FSJ1-50A



AVA5P-50-42



FSJ4P-50B-42

# COAXIAL CABLE PRODUCTS

## 50 OHM CONNECTORS



1/4 in. Connector  
(L1HM-D)



1/4 in. Connector  
(F1TDM-C)



3/8 in. Connector  
(L2TNM-PL)



3/8 in. Connector  
(F2HM-D)

### Ordering Information

Cable Size	Cable Type	Connector Type	Connector Material ID	Cable Prep Tool Used	Coupling Nut Torque Tool Used
50 Ohm Connectors					
1/4 in.	Standard; LDF1-50 LDF1RK-50	4.3-10 Male	L1HM-D	CPT-L1-D	TW-4310
		7-16 DIN Male	L1TDM-PL	CPT-L1	244377
		7-16 DIN Female	L1TDF-PL		N/A
		N Male	L1TNM-PL		244379
		N Female	L1TNF-PL		N/A
		N Male, Right Angle	L1TNR-PL		244379
	Superflexible; FSJ1-50A FSJ1RK-50B	4.3-10 Male	F1HM-D	CPT-F1-D	TW-4310
		4.3-10 Male, Right Angle	F1HR-D		TW-4310
		7-16 DIN Male	F1TDM-C	MCPT-1412	244377
		7-16 DIN Female	F1TDF		N/A
		N Male	F1TNM-HC		244379
		N Female	F1PNF		N/A
		N Male, Right Angle	F1TNR-HC		244379
3/8 in.	Standard; LDF2-50 LDF2RK-50	4.3-10 Male	L2HM-D	TBD	TW-4310
		7-16 DIN Male	L2TDM-PL	CPT-E2L2N	244377
		7-16 DIN Female	L2TDF-PL		N/A
		N Male	L2TNM-PL		244379
		N Female	L2TNF-PL		N/A
		N Male, Right Angle	L2TNR-PL		244379
	Superflexible; FSJ2-50 FSJ2RK-50	4.3-10 Male	F2HM-D	CPT-F2-D	NA
		7-16 DIN Male	F2TDM-PL	MCPT-3812	244377
		7-16 DIN Female	F2PDF-C	N/A	N/A
		7-16 DIN Male, Right Angle	F2PDR-C	N/A	244377
		N Male	F2TNM-PL	MCPT-3812	244379
		N Female	F2PNF-C	N/A	N/A

## COAXIAL CABLE PRODUCTS

## 50 OHM CONNECTORS (CONTINUED)


1/2 in. Connector  
(L4TDF-PSA)

## Ordering Information

Cable Size	Cable Type	Connector Type	Connector Material ID	Cable Prep Tool Used	Coupling Nut Torque Tool Used
50 Ohm Connectors					
1/2 in.	Standard; LDF4-50A / LDF4RKP-50A	4.3-10 Male	L4HM-F	L4310-GT	TW-4310
		4.3-10 Male	L4HM-D	CPT-L4-D	TW-4310
		4.3-10 Female	L4HF-S	L4310-GT	NA
		4.3-10 Female	L4HF-D	CPT-L4-D	NA
		4.3-10 Male Right Angle	L4HR-D		TW-4310
		4.3-10 Male Push Pull	L4HMP-D	CPT-L4-D	NA
		N Male Right Angle	L4NR-F	MCPT-L4	244379
		7/16 DIN Male	L4TDM-PSA		244377
		7/16 DIN Female	L4TDF-PSA		NA
		N Male	L4TNM-PSA		244379
		N Female	L4TNF-PSA		NA
	Superflexible; FSJ4-50B / FSJ4RK-50B	4.3-10 Male	F4HM-F	F4310-GT or MCPT-1412	TW-4310
		4.3-10 Male	F4HM-D	CPT-F4-D	
		4.3-10 Female	F4HF-S	CPT-F4-D	NA
		4.3-10 Female	F4HF-D		
		4.3-10 Male Push Pull	F4HMP-D		TW-4310
		4.3-10 Male Right Angle	F4HR-D		
		7-16 DIN Male	F4PDMV2-C		244377
		7-16 DIN Female	F4PDF-C		NA
		7-16 DIN Male, Right Angle	F4DR-C		244377
		N Male	F4PNMV2-HC		244379
		N Female	F4PNF-C		NA
		N Male Right Angle	F4NR-HC		244379

COAXIAL CABLE PRODUCTS

50 OHM CONNECTORS (CONTINUED)



7/8 in. Connector  
(A5HF-D)

7/8 in. Connector  
(AL5DM-PSA)

1-1/4 in. Connector  
(AL6DM-PSA)

Ordering Information

Cable Size	Cable Type	Connector Type	Connector Material ID	Cable Prep Tool Used	Coupling Nut Torque Tool Used
50 Ohm Connectors					
7/8 in.	AVA5-50 / AVA-5RK-50 AVA5-50FX AVA5RK-50FX	7-16 DIN Male	AL5DM-PSA	CPT-78U	244377
		7-16 DIN Female	AL5DF-PSA		NA
		N Male	AL5NM-PSA		244379
		N Female	AL5NM-PSA		NA
		4.3-10 Male	78EZHM	A5FX-EZPT	TW-4310
		4.3-10 Female	78EZHF		NA
		7-16 DIN Male	78EZDM	A5FX-EZPT	244377
		7-16 DIN Female	78EZDF		NA
		N Male	78EZNM		244379
		N Female	78EZNF		NA
		4.3-10 Male	A5HM-D	MCPT-A5-D	TW-4310
		4.3-10 Female	A5HF-D		NA
1-1/4 in.	AVA6-50 / AVA-6RK-50	4.3-10 Male	A6HM-S	MCPT-114158-S	TW-4310
		4.3-10 Female	A6HF-S		NA
		7-16 DIN Male	AL6DM-PSA	CPT-114U	244377
		7-16 DIN Female	AL6DF-PSA		NA
		7-16 DIN Male	114EZDM	A6-EZPT	244377
		7-16 DIN Female	114EZDF		NA
		N Male	114EZNM		244379
		N Female	114EZNF		NA

## COAXIAL CABLE PRODUCTS

### 50 OHM CONNECTORS (CONTINUED)



1-5/8 in.  
Connector  
(AL7DM-PSA)

#### Ordering Information

Cable Size	Cable Type	Connector Type	Connector Material ID	Cable Prep Tool Used	Coupling Nut Torque Tool Used
50 Ohm Connectors					
1-5/8 in.	AVA7-50	4.3-10 Male	A7HM-S	MCPT-114158-S	TW-4310
		4.3-10 Female	A7HF-S		NA
		7-16 DIN Male	AL7DM-PSA	CPT-158U	244377
		7-16 DIN Female	AL7DF-PSA		NA
		7-16 DIN Male	158EZDM	A7-EZPT	244377
		7-16 DIN Female	158EZDF		NA
		N Male	AL7NM-PSA	CPT-158U	244379
		N Female	AL7NF-PSA		NA
		N Male	158EZNM	A7-EZPT	244379
		N Female	158EZNF		NA

## PREP TOOL BLADE KIT REPLACEMENTS

#### Ordering Information

Description	ANDREW Material ID
<b>Replacement Blade Kits</b> For cable preparation tools	
Use with CPT-F4B & CPT-F4-D only	CPT-BKSF4
Use with CPT-12U & CPT-L4-D only	CPT-BK12U
Use with A5FX-EZPT only	BK-A5FXEZPT-JC
Use with A6-EZPT only	BK-A6A7EZPT-JC
Use with A7-EZPT only	



Replacement Blade Kits  
CPT-BKSF4



Replacement Blade Kits  
CPT-BK12U



## COAXIAL CABLE PRODUCTS

### ADAPTERS

#### Ordering Information

Description	ANDREW Material ID
7/16 DIN FEMALE TO 7/16 DIN FEMALE	TA-DFDF
7/16 DIN FEMALE R/A TO 7/16 DIN MALE	TA-DFDR
7/16 DIN FEMALE TO 4.3-10 MALE	TA-DFHM
7/16 DIN MALE TO 7/16 DIN FEMALE	TA-DMDF
7/16 DIN MALE TO 7/16 DIN MALE	TA-DMDM
7/16 DIN MALE TO 4.3-10 FEMALE	TA-DMHF
7/16 DIN MALE TO 4.3-10 MALE	TA-DMHM
7/16 DIN MALE TO 4.3-10 MALE, HAND TORQUE	TA-DMHM-K
7/16 DIN MALE TO 4.1/9.5 FEMALE	TA-DMKF
7/16 DIN MALE TO 4.1/9.5 MALE	TA-DMKM
4.3-10 FEMALE TO 4.3-10 MALE R/A	TA-HFHR
2.2-5 FEMALE TO N MALE LOW-PIM	TA-JMNF
N FEMALE TO 7/16 DIN FEMALE	TA-NFDF
N MALE TO 7/16 DIN MALE	TA-NFDM
N FEMALE TO 4.3-10 FEMALE	TA-NFHF
N FEMALE TO 4.3-10 MALE	TA-NFHM
N FEMALE TO 4.1/9.5 FEMALE	TA-NFKF
N FEMALE TO 4.1/9.5 MALE	TA-NFKM
N FEMALE TO N FEMALE	TA-NFNF
N MALE TO 7/16 DIN FEMALE	TA-NMDF
N MALE TO 7/16 DIN MALE	TA-NMDM
N MALE TO 4.3-10 FEMALE	TA-NMHF
N MALE TO N MALE	TA-NMNM
N MALE R/A TO N FEMALE	TA-NRNF
QMA FEMALE TO 7-16 DIN MALE LOW-PIM	TA-QFDM
NEX10 Male to SMA Female Adapter	TA-XMSF
NEX10 Male to 4.3-10 Female Adapter	TA-XMHF
NEX10 Male to 7/16 DIN Male Adapter	TA-XMDM



TA-DFDF



TA-JMNF



TA-DMHM



TA-NMDF



# COAXIAL CABLE PRODUCTS

## OUTDOOR JUMPERS

Standard connectors ANDREW connector PN																							
				4,3/10 male	4,3/10 female	4,3/10 right angle	7/16 male	7/16 female	7/16 right angle	N male	N female	N right angle	NEX10 male	Nex10 female	Nex10 right angle	SMA male	SMA Right angle	QMA male	QMA right angle	TNC Male	TNC Female	4,3-10 male Push pull	Nex10 male Push pull
Size	Cable Type	PIM	Jumper type	HM	HF	HR	DM	DF	DR	NM	NF	NR	XM	XF	XR	SM	SR	QM	QMR	TM	TF	HMQ/HMP	XMQ/XMP
1/4	Super Flex	Static PIM test	F1A	x	x	x	x	x	x	x	x	x	x	x	x	x	x	x	x	x	x	x	x
1/4	Super Flex	Dynamic PIM test	F1	x	x	x	x	x	x				x										
3/8	Super Flex	Static PIM test	F2A	x		x	x	x	x	x	x	x											
3/8	Super Flex	Dynamic PIM test	F2	x		x	x	x	x														
3/8	Low Loss	Static PIM test	LS2	x		x	x			x	x		x									x	
3/8	Low Loss	Dynamic PIM test	LS2	x		x	x			x	x		x									x	
1/2	Super Flex	Static PIM test	F4A	x	x	x	x	x	x	x	x	x										x	
1/2	Super Flex	PIM not relevant	F4C-HP	x	x	x	x	x	x	x	x	x										x	
1/2	Super Flex	Dynamic PIM test	F4	x	x	x	x	x	x														
1/2	Low Loss	Dynamic PIM test	L4	x	x	x	x	x	x														

X is integer for length				Unit	PIM Suffix	Example
X	M	-P	F1A-HM	M	-P	F1A-HM-M-3M-P
X	M	-D	F1-HM	M	-D	F1-HM-M-3M-D
X	M	-P	F2A-HM	M	-P	F2A-HM-M-3M-P
X	M	-D	F2A-HM	M	-D	F2A-HM-M-3M-D
X	M	-P	LS2-HM	M	-P	LS2-HM-M-3M-P
X	M	-D	LS2-HM	M	-D	LS2-HM-M-3M-D
X	M	-P	F4A-HM	M	-P	F4A-HM-M-3M-P
X	M		F4C-HP	M		F4C-HP-HM-M-3M
X	M	-D	F4-HM	M	-D	F4-HM-M-4M-D
X	M	-D	L4A-HM	M	-D	L4A-HM-M-3M-D

# COAXIAL CABLE PRODUCTS

## INDOOR JUMPERS

Standard connectors ANDREW connector PN																								
				4,3/10 male	4,3/10 female	4,3/10 right angle	7/16 male	7/16 female	7/16 right angle	N male	N female	N right angle	NEX10 male	Nex10 female	Nex10 right angle	SMA male	SMA Right angle	QMA male	QMA right angle	TNC Male	TNC Female	4,3-10 male Push pull	Nex10 male Push pull	
Size	Cable Type	PIM	Jumper type	-	HM	HF	HR	DM	DF	DR	NM	NF	NR	XM	XF	XR	SM	SR	QM	QMR	TM	TF	HM0/HMP	XM0/XMP
1/4	Super Flex	Static PIM test	F1R		x	x	x	x	x	x	x	x	x	x	x	x	x	x	x	x	x	x	x	x
3/8	Super Flex	Static PIM test	F2R		x		x	x	x	x	x	x	x											
3/8	Low Loss	Static PIM test	L2R		x		x	x		x	x	x	x				x				x			
1/2	Super Flex	Dynamic PIM test	F4R		x	x	x	x	x	x													x	
1/2	Low Loss	Dynamic PIM test	L4R		x	x	x	x	x	x				x	x	x								

X is integer for length	UoM	PIM Suffix	Example
X	M	-P	F1R-HMHM-3M-P
X	M	-P	F2R-HMHM-3M-P
X	M	-P	L2R-NMNM-3M-P
X	M	-D	F4R-HMHM-3M-D
X	M	-D	L4R-HMHM-3M-D

## OUTDOOR CLUSTERS

Standard connectors ANDREW connector PN																								
				4,3/10 male	4,3/10 female	4,3/10 right angle	7/16 male	7/16 female	7/16 right angle	N male	N female	N right angle	NEX10 male	Nex10 female	Nex10 right angle	SMA male	SMA Right angle	QMA male	QMA right angle	TNC Male	TNC Female	4,3-10 male Push pull	Nex10 male Push pull	
Size	Cable Type	PIM	Jumper type	HM	HF	HR	DM	DF	DR	NM	NF	NR	XM	XF	XR	SM	SR	QM	QMR	TM	TF	HMO/HMP	XMO/XMP	
1/4	Super Flex	Static PIM test	CLT4	x	x	x				x			x											
1/4	Super Flex	Static PIM test	CLT5	x	x	x				x			x											
1/4	Super Flex	Dynamic PIM test	MLOC-4	x	x	x				x	x		x											
1/4	Super Flex	Dynamic PIM test	MLOC-5	x	x	x				x	x		x											
3/8	Low Loss	Dynamic PIM test	MLOC-4	x	x		x			x	x		x									x		
3/8	Low Loss	Dynamic PIM test	MLOC-5	x	x		x			x	x		x									x		
0.141 in.	Super Flex	Static PIM test	MLOC-4	x	x																			
0.141 in.	Super Flex	Static PIM test	MLOC-5	x	x																			

X is integer for length	UoM	PIM Suffix	Example
X	M	-CO	CLT4-HF-1M-CO
X	M	-CO	CLT5-HF-1M-CO
X	M		MLOC-4-FIXM-HF-3M
X	M		MLOC-4-FIXM-HF-3M
X	M		MLOC-4-LS2X-MHM-3M
X	M		MLOC-5-LS2X-MHM-3M
X	M		MLOC4-RGX-FHM-1M
X	M		MLOC5-RGXF-HF-1M

Part Number examples including HELIAX SureGuard weatherproofing	
	D-CLASS series
MLOC 1/4 in. assy	MLOC4-F1XMXMW-3M
	MLOC5-F1XMXMW-5M
MLOC 3/8 in. assy	MLOC4-LS2BNHMMW-3M
	MLOC5-F1XMHMMW-5M

COAXIAL CABLE PRODUCTS

PROTECTIVE CAP KITS

Ordering Information

Description	ANDREW Material ID
<b>Male interface, mates on female device</b>	
NEX10 female end cap	NEX10-CAPKIT
2.2-5 male end cap assembly	JM-CAPKIT
4.3-10 female end cap	SMALL-CAPKIT
7-16 DIN female end cap	DF-CAPKIT
<b>Female interface, mates on male device</b>	
7-16 DIN male end cap	DM-CAPKIT
2.2-5 female end cap assembly	JF-CAPKIT
4.3-10 male end cap	SMALL-M-CAPKIT
MQ male port	CLT-CAPKIT
Female End Cap Assembly for MLOC, Quick lock	MLOC-CAPKIT



4.3-10 Female End Cap  
SMALL-CAPKIT



MQ Male Port  
CLT-CAPKIT



Nex10 Female End Cap  
NEX10-CAPKIT



Female End Cap Assembly for MLOC,  
Quick lock MLOC-CAPKIT

## COAXIAL CABLE PRODUCTS

## SURGE ARRESTORS

### Ordering Information

Description	ANDREW Material ID
<b>Arrestor Plus® LTE Band Quarterwave Surge Arrestor</b>	
695-2700 MHz, with interface types 4.3-10 Female and 4.3-10 Male	APT-HFHM
806-2170 MHz, with interface types 4.3-10 Female and 4.3-10 Male	APG-HFHM
<b>Quarterwave Surge Arrestors</b>	
695-2700 MHz, 4.3-10 Female and 4.3-10 Male	APT-HFHM
C-Band 3400-4000 MHz, 4.3-10 Female and 4.3-10 Male	APT-HFHM-CB
<b>DC Block 555-2700 MHz</b> 555-2700 MHz, with interface types 4.3-10 Female and 4.3-10 Male	ADCB-HFHM
<b>Arrestor Plus® Gas Tube Surge Arrestor</b>	
(90 V), 45-2170 MHz, with interface types N Female Bulkhead and N Female	APG-BNFNF-090
(350 V), 45-2170 MHz, with interface types N Female Bulkhead and N Male	APG-BNFNM-350
(350 V), 45-2170 MHz, with interface types DIN Female Bulkhead and DIN Female	APG-BDFDF-350
(350 V), 45-2170 MHz, with interface types N Female Bulkhead and N Female	APG-BNFNF-350
<b>Dual Band Quarterwave Surge Arrestor</b>	
824 - 960 MHz, 1710 - 2000 MHz, 2000 - 2170 MHz, with interface types DIN Female and DIN Female	APT-DFDF-DB
806-960 MHz and 1700-2170 MHz, with interface types DIN Female Bulkhead and DIN Male	APT-BDFDM-DB
806-960 MHz and 1700-2170 MHz, with interface types DIN Female Bulkhead and DIN Female	APT-BDFDF-DB
For LTE frequencies, with interface types DIN Female Bulkhead and DIN Male	APTDC-BDFDM-DBW
806-2170 MHz, with interface types N Female and N Male	APT-NFNM-DB
800-2170 MHz, with interface types N Female and N Female	APT-NFNF-DB
806-960 MHz and 1700-2170 MHz, with interface types DIN Female and DIN Male	APT-DFDM-DB



4.3-10 F- 4.3-10 M  
(APT-HFHM)



4.3-10 F- 4.3-10 M  
(APT-HFHM-CB)



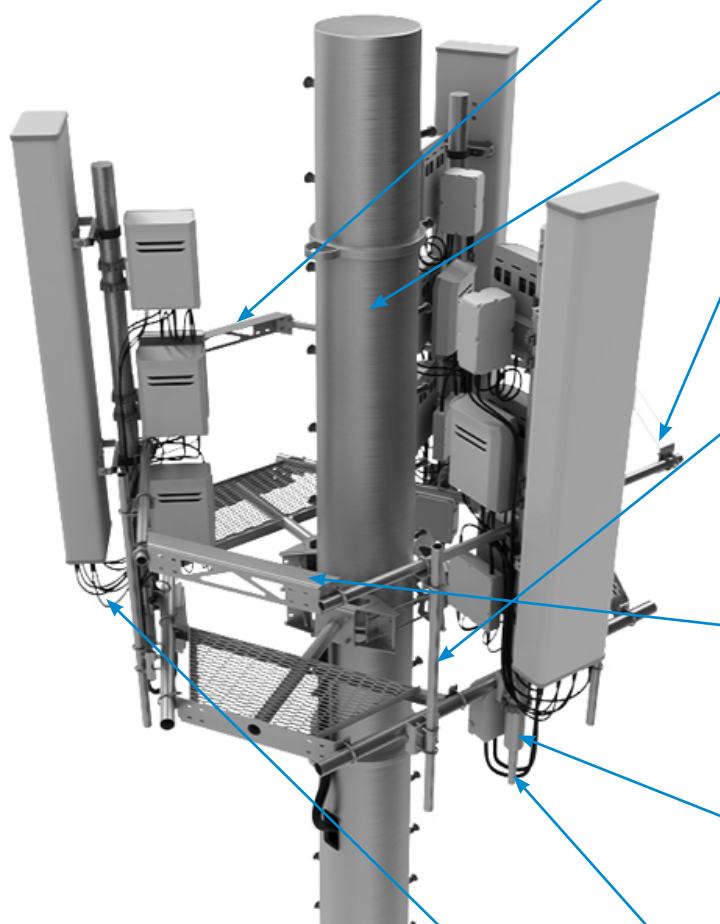
DC Block  
(ADCB-HFHM)



Dual Band Quarterwave  
(APT-DFDF-DB)

# ACCESSORY PRODUCTS

## APPLICATION PIM GUARD



Material ID	Works with Material ID	
<b>RA-38C</b>	SnapTak hangers Block Hangers SWH-200-10	
Stand off adapter, PIM Free		
Can be strapped to round or angle member towers to attach a M10 threaded rod or SnapTak hangers, one 3/4 in. through hole, PIM Free		
<b>FBR-COIL-S</b> , PIM Free	5-7 mm fiber cables	
Excess Discrete Fiber Coiling Reel		
Accommodates 5 m of excess 7 mm fiber, mounts to round or angle steel, stack up to 3, PIM Free		
<b>SA-1C</b> , PIM Free	SnapTak hangers SWH-200-10	
Snap-in Hanger Adapter		
Two sets of slots for round member attachment, one 3/4 in. through hole, PIM Free	SnapTak hangers Block Hangers SA-1C SA-3C SWH-200-10	
<b>SA-1TR</b> , PIM Free		
Multifunction Adapter for SnapTak Hangers, one 3/4 in. through hole, PIM Free		
Threads onto M10 & M12 bolts & U-bolts, snaps into 3/4 in. holes	SnapTak hangers Mounting of SA-3C SWH-200-10	
<b>UA-3C</b> , PIM Free		
Angle Adapter, two 3/4 in. through holes, PIM Free		
Used to attached SanpTak hangers to angle members, stack up to 3 hangers, torque stop screw, PIM free	SnapTak hangers SWH-200-10	
<b>SA-3C</b>		
Snap-in Hanger Adapter, three 3/4 in. through hole, PIM Free	RA-38C SA-1C SA-1TR UA-3C SA-3C	
Two sets of slots for round member or angle steel attachment. M10 holes for bolt down attachment		
<b>SWH-200-10</b>	RA-38C SA-1C SA-1TR UA-3C SA-3C	
SnapWrap Cable Management Strap, PIM Free		
Bundle multiple cable types and sizes, use with any polymer stand off or angle adapter to mount	RA-38C SA-1C SA-1TR UA-3C SA-3C	
<b>SSH-1117 / SSH-411</b>		
Snap-in Adjustable Hanger, PIM Free	RA-38C SA-1C SA-1TR UA-3C SA-3C	
Fits 11.0 mm to 17.0 mm and 4.0 mm to 11.0 mm cables, use with any polymer stand off or angle adapter with 3/4 in. through holes to mount		

# ACCESSORY PRODUCTS

## PIM GUARD COMPONENTS

Includes PIM free cable support brackets, hangers, RRU mounts, roof mounts, cable bands, cable ties, tower adapters - optimized to reduce PIM while maximizing structural integrity.

### Ordering Information

Description	Cable Size Range	ANDREW Material ID
SnapTak Gen 2 PIM Guard Adjustable Hangers (packs of 10)	4.0 to 11.0 mm	SSH-411
	11.0 to 17.0 mm	SSH-1117
SnapStak Plus Trunk Cable Hangers (packs of 10)		
8 and 6 AWG 6-conductor power cables	14.0 to 25.0 mm	SSH-M
Isolator for SnapStak cable hangers		SA-ISO
Adapters and Banding		
Angle adapter (pack of 10)		UA-3C
3-way adapter for snap-in hangers (pack of 10)		SA-3C
Snap-in adapter for round members, 1-position (pack of 10)		SA-1C
Multifunction adapter (pack of 10)		SA-1TR
Stand off adapter; straps to round or angle member towers to attach a 3/8 in. threaded rod or snap-in hanger (pack of 10)		RA-38C
Acetal cable band with locking head, 16 in., (50 pieces)		CB-12-16LH
Acetal cable band with locking head, 27 in., (25 pieces)		CB-12-27LH
Cable banding, bulk, ½-inch x 50 foot reel		CB-12-50
Locking heads for cable banding number CB-12-50 (25 pieces)		CB-LH-25
Installation tool for cable banding CB-12-50		CB-IT
Universal Hanger Adapter (pack of 10)		
Mounts snap-in hangers, grommets, and threaded rods onto towers with round members or 1/4 in. and 3/8 in. angle members		UHA-3C
SnapWrap (pack of 10)		
Bundle multiple cable types and sizes with Snap-in installation		SWH-200-10
Excess Cable Management		
Accommodates 5 m of excess 7 mm fiber, mounts to round or angle steel, stack up to 3		FBR-COIL-S



SnapTak Gen 2 Hanger (SSH-411)



SnapStak Plus Trunk Cable Hanger (SSH-M)



Isolator (SA-ISO)



Angle Adapter (UA-3C)



3-Way Adapter (SA-3C)



Excess Cable Management (FBR-COIL-S)



Snap-in Adapter (SA-1C)



Multifunction Adapter (SA-1TR)



Stand Off Adapter (RA-38C)



SnapWrap (SWH-200-10)



Acetal Cable Bands (CB-12-16LH)



Cable Banding (CB-12-50)



Locking Head (CB-LH-25)



Cable Banding Installation Tool (CB-IT)



Universal Hanger Adapter (UHA-3C)

# ACCESSORY PRODUCTS

## PIM GUARD ANTENNA AND RRU CABLE SUPPORT BRACKETS

### Ordering Information

Description	ANDREW Material ID
Polymer PIM Guard Antenna and RRU Cable Support Bracket with 2 positions for stackable hangers (up to 2 per position)	PGP-CS02
Polymer PIM Guard Antenna and RRU Cable Support Bracket with 4 positions / 8 cables for stackable hangers (up to 2 per position)	PGP-CS04
Polymer PIM Guard Antenna and RRU Cable Support Bracket with 8 positions / 16 cables for stackable hangers (up to 2 per position)	PGP-CS08
Polymer PIM Guard Antenna and RRU Cable Support Bracket with 10 positions / 20 cables for stackable hangers (up to 2 per position)	PGP-CS10
Polymer PIM Guard Antenna and RRU Cable Support Bracket with 12 positions / 24 cables for stackable hangers (up to 2 per position)	PGP-CS12
Polymer PIM Guard Antenna and RRU Cable Support Bracket with 16 positions / 32 cables for stackable hangers (up to 2 per position)	PGP-CS16
Polymer PIM Guard Antenna and RRU Cable Support Bracket with 18 positions / 36 cables for stackable hangers (up to 2 per position)	PGP-CS18
Standoff Expansion Pack Polymer PIM Guard Cable Support	PGCS-2000
8 Cable Position Expansion Pack Polymer PIM Guard Cable Support	PGCS-3000
2 Cable Position Expansion Pack Polymer PIM Guard Cable Support	PGCS-4000



PGP-CS02



PGCS-2000



PGP-CS08



PGCS-3000



PGP-CS16



PGCS-4000



## ACCESSORY PRODUCTS

### MULTI CABLE GROMMETS

#### Ordering Information

Description	ANDREW Material ID
<b>Multi Cable Grommets</b> (packs of 10)	
Grommet with 4 x 6 mm hole and 3 X 10 mm hole for 1-1/4 in SnapStack or Click-on Hanger	HG-064103-114
Grommet with 4 x 6 mm holes and 4 X 10 mm holes for 1-5/8 in SnapStack or Click-on Hanger	HG-064104-158
Grommet with 4 x 6 mm hole and 4 X 11 mm hole for 1-5/8 in SnapStack or Click-on Hanger	HG-064114-158
Grommet with 4 x 6 mm holes and 4 X 12 mm holes for 1-5/8 in SnapStack or Click-on Hanger	HG-064124-158
Grommet with 4 x 6 mm holes and 4 X 14 mm holes for 1-5/8 in SnapStack or Click-on Hanger	HG-064144-158
Grommet with 4 x 6 mm hole and 4 X 16 mm hole for 1-5/8 in SnapStack or Click-on Hanger	HG-064164-158
Grommet with 1 x 9 mm hole and 2 X 19 mm hole for 1-5/8 in SnapStack or Click-on Hanger	HG-091192-158
Grommet with 1 x 9 mm hole and 1 X 24 mm hole for 1-5/8 in SnapStack or Click-on Hanger	HG-091241-158
Grommet with 1 x 9 mm hole and 1 X 29 mm hole for 1-5/8 in SnapStack or Click-on Hanger	HG-091291-158
Grommet with Single 10 mm hole for 1/2 in. Standard or Click-on Hanger	HG-10MM-12
Grommet with Single 15 mm hole for a 7/8 in. Snap-in or Click-on Hanger	HG-15MM-78
Grommet with 4 x 16 mm holes for 1-5/8 in. SnapStack or Click-on Hanger	HG-164-158
Grommet with Single 23 mm hole for a 7/8 in. Snap-in or Click-on Hanger	HG-23MM-78
Grommet with 23.6 mm hole for 1-1/4 in. Standard or Click-on Hanger	HG-24-114
Grommet with Single 27 mm hole for a 1-1/4 in. Snap-in or Click-on Hanger	HG-27MM-114
Grommet with 33 mm hole for 1-1/4 in. Standard or Click-on Hanger	HG-33-114
Grommet with Single 37 mm hole for 1 5/8 in. Standard or Click-on Hanger	HG-37MM-158
Grommet with 10 mm hole for 1-1/4 in. Standard or Click-on Hanger	HG-38-114
Grommet with Single 10 mm hole for 7/8 in. Standard or Click-on Hanger	HG-38-78
Grommet with Single 44 mm hole for 1 5/8 in. Standard or Click-on Hanger	HG-44MM-158
Grommet with 19 mm hole for 1-1/4 in. SnapStack or polymer block hanger	HG-58-114
Grommet with Single 5 mm hole for 1/2 in. Standard or Click-on Hanger	HG-5MM-12



HG-064103-114



HG-064104-158



HG-064114-158



HG-064124-158



HG-064144-158



HG-064164-158



HG-091192-158



HG-091241-158



HG-091291-158



HG-10MM-12



HG-15MM-78



HG-164-158



HG-23MM-78



HG-24-114



HG-27MM-114



HG-33-114



HG-37MM-158



HG-38-114



HG-38-78



HG-44MM-158



HG-58-114



HG-5MM-12

ACCESSORY PRODUCTS

UNIVERSAL BARREL CUSHION GROMMETS

Ordering Information

Description	Used with Hangers	ANDREW Material ID
Universal Barrel Cushion Grommets (packs of 10)		
For 3-12.5 mm cables, for 1/2 in. hangers	SSH-12 / 43211A	BCU12
For 4-14 mm cables, for 7/8 in. Standard or Click-on Hanger	SSH-78 / L5CLICKB	BCU78
For 14-25 mm cables, for 1-1/4 in. Standard or Click-on Hanger	SSH-114 / L6CLICK	BCU114
For 14-36 mm cables, for 1-5/8 in. Standard or Click-on Hanger	SSH-158 / L7CLICK	BCU158
For 4-10 mm cables, accommodates up to quantity 7 each cables, for 1-5/8 in. Standard or Click-on Hanger	SSH-158 / L7CLICK	BCU158-4M10M-7X



Barrel Cushion Grommet  
(BCU114)



Barrel Cushion Grommet  
(BCU12)



Barrel Cushion Grommet  
(BCU158)



Barrel Cushion Grommet  
(BCU158-4M10M-7X)



Barrel Cushion Grommet  
(BCU78)

ACCESSORY PRODUCTS

HANGERS

All cable hangers primary function is to resist wind load and are fastened to the support structure in 3 ft (0.9 m) intervals for typical climates. For Hanger Spacing Guidelines Contact Technical Support.

Ordering Information

Description	ANDREW Material ID
<b>Butterfly Hanger</b> (packs of 10)	
For 1/2 in. or 3/8 in. coaxial cable and elliptical waveguide 180, 220, and 240	43211A
For 7/8 in. coaxial cable and elliptical waveguide 85 and 90	42396A-5
For 1-1/4 in. coaxial cable	42396A-1
For 1-5/8 in. coaxial cable	42396A-2
<b>SnapStak® Hanger</b> (packs of 10)	
For 1/2 in. coaxial cable	SSH-12
For 7/8 in. coaxial cable	SSH-78
For 1-1/4 in. coaxial cable	SSH-114
For 1-5/8 in. coaxial cable	SSH-158
<b>Hanger Reinforcement Bar</b> (packs of 10)	
Provides the ability to add an additional cable run to the stack	SSHR-10

Hanger mounting hardware on page 31

Description	ANDREW Material ID
<b>Double Block Hangers</b> (packs of 10)	
For 4MM cable	BHD-4MM
For 1/4 in. cable	BHD-14
For 3/8 in. cable	BHD-38
For SuperFlex 1/2 in. cable	BHD-12S
For 1/2 in. cable	BHD-12
For 7/8 in. cable	BHD-78
For 1-1/4 in. cable	BHD-114
For 1-5/8 in. cable	BHD-158
<b>Single Block Hangers</b> (packs of 10)	
For 1-1/4 in. cable	BHS-114
For 1-5/8 in. cable	BHS-158

Hanger mounting hardware on page 31



Butterfly Hanger  
(42396A-5)



SnapStak  
Hanger  
(SSH-12)



Hanger Reinforcement Bar  
(SSHR-10)



Double Block Hanger  
(BHD-12)



Single Block  
Hanger  
(BHS-114)

# ACCESSORY PRODUCTS

## KWIKCLAMP HANGERS

### Ordering Information

Description	ANDREW Material ID
Hanger for 1/4 in superflexible coaxial cable, single stack; includes hardware	F1-CLAMP-E1B
Hanger for 1/4 in superflexible coaxial cable, double stack; includes hardware	F1-CLAMP-E2B
Hanger for 1/4 in superflexible coaxial cable, triple stack; includes hardware	F1-CLAMP-E3B
Hanger for 1/4 in superflexible coaxial cable, quadruple stack; includes hardware	F1-CLAMP-E4B
Hanger for 1/2 in superflexible coaxial cable, single stack; includes hardware	F4-CLAMP-E1B
Hanger for 1/2 in superflexible coaxial cable, double stack; includes hardware	F4-CLAMP-E2B
Hanger for 1/2 in superflexible coaxial cable, triple stack; includes hardware	F4-CLAMP-E3B
Hanger for 1/2 in superflexible coaxial cable, quadruple stack; includes hardware	F4-CLAMP-E4B
Hanger for 1/2 in coaxial cable, single stack; includes hardware	L4-CLAMP-E1B
Hanger for 1/2 in coaxial cable, double stack; includes hardware	L4-CLAMP-E2B
Hanger for 1/2 in coaxial cable, triple stack; includes hardware	L4-CLAMP-E3B
Hanger for 1/2 in coaxial cable, quadruple stack; includes hardware	L4-CLAMP-E4B
Hanger for 7/8 in coaxial cable, single stack; includes hardware	L5-CLAMP-E1B
Hanger for 7/8 in coaxial cable, double stack; includes hardware	L5-CLAMP-E2B
Hanger for 7/8 in coaxial cable, triple stack; includes hardware	L5-CLAMP-E3B
Hanger for 7/8 in coaxial cable, quadruple stack; includes hardware	L5-CLAMP-E4B
Hanger for 1-1/4 in coaxial cable, single stack; includes hardware	L6-CLAMP-E1B
Hanger for 1-1/4 in coaxial cable, double stack; includes hardware	L6-CLAMP-E2B
Hanger for 1-1/4 in coaxial cable, triple stack; includes hardware	L6-CLAMP-E3B
Hanger for 1-1/4 in coaxial cable, quadruple stack; includes hardware	L6-CLAMP-E4B
Hanger for 1-5/8 in coaxial cable, single stack; includes hardware	L7-CLAMP-E1B
Hanger for 1-5/8 in coaxial cable, double stack; includes hardware	L7-CLAMP-E2B
Hanger for 1-5/8 in coaxial cable, triple stack; includes hardware	L7-CLAMP-E3B
Hanger for RG8 cable, single stack; includes hardware	R8-CLAMP-E1B
Hanger for RG8 cable, double stack; includes hardware	R8-CLAMP-E2B
Hanger for RG8 cable, triple stack; includes hardware	R8-CLAMP-E3B
Hanger for RG8 cable, quadruple stack; includes hardware	R8-CLAMP-E4B

See specification sheet for packaging quantity



# ACCESSORY PRODUCTS

## SHK HANGERS

### Ordering Information

Description	ANDREW Material ID
Single Hanger Kit for 1-1/4 in. coaxial cable, single stack; includes hardware and angle adapter	SHK-114-1-P
Single Hanger Kit for 1/2 in. coaxial cable, single stack; includes hardware and angle adapter	SHK-12-1-P
Single Hanger Kit for 1/2 in. coaxial cable, double stack; includes hardware and angle adapter	SHK-12-2-P
Single Hanger Kit for 1/2 in. coaxial cable, triple stack; includes hardware and angle adapter	SHK-12-3-P
Single Hanger Kit for 1-5/8 in. coaxial cable, single stack; includes hardware and angle adapter	SHK-158-1-P
Single Hanger Kit for 7/8 in. coaxial cable, single stack; includes hardware and angle adapter	SHK-78-1-P
Single Hanger Kit for 7/8 in. coaxial cable, double stack; includes hardware and angle adapter	SHK-78-2-P
Single Hanger Kit for 7/8 in. coaxial cable, triple stack; includes hardware and angle adapter	SHK-78-3-P



SHK-114-1-P



SHK-12-1-P



SHK-78-2-P



SHK-12-3-P



SHK-3944-3-P



SHK-78-1-P



SHK-78-2-P



SHK-78-3-P

## KWIK CLAMPS FOR C-RAIL SUPPORT

### Ordering Information

Description	ANDREW Material ID
Hanger for 1/2 in superflexible coaxial cable, single stack; includes hardware for C-rail application	F4CLAMP-CNL-E1B
Hanger for 1/2 in superflexible coaxial cable, double stack; includes hardware for C-rail application	F4CLAMP-CNL-E2B
Hanger for 1/2 in superflexible coaxial cable, triple stack; includes hardware for C-rail application	F4CLAMP-CNL-E3B
Hanger for 1/2 in coaxial cable, single stack; includes hardware for C-rail application	L4CLAMP-CNL-E1B
Hanger for 1/2 in coaxial cable, double stack; includes hardware for C-rail application	L4CLAMP-CNL-E2B
Hanger for 1/2 in coaxial cable, triple stack; includes hardware for C-rail application	L4CLAMP-CNL-E3B
Hanger for 7/8 in coaxial cable, single stack; includes hardware for C-rail application	L5CLAMP-CNL-E1B
Hanger for 7/8 in coaxial cable, double stack; includes hardware for C-rail application	L5CLAMP-CNL-E2B
Hanger for 7/8 in coaxial cable, triple stack; includes hardware for C-rail application	L5CLAMP-CNL-E3B
Hanger for 1-1/4 in coaxial cable, single stack; includes hardware for C-rail application	L6CLAMP-CNL-E1B
Hanger for 1-1/4 in coaxial cable, double stack; includes hardware for C-rail application	L6CLAMP-CNL-E2B
Hanger for 1-1/4 in coaxial cable, triple stack; includes hardware for C-rail application	L6CLAMP-CNL-E3B
Hanger for 1-5/8 in coaxial cable, single stack; includes hardware for C-rail application	L7CLAMP-CNL-E1B
Hanger for 1-5/8 in coaxial cable, double stack; includes hardware for C-rail application	L7CLAMP-CNL-E2B
Hanger for 1-5/8 in coaxial cable, triple stack; includes hardware for C-rail application	L7CLAMP-CNL-E3B
Hanger for RG8 cable, single stack; includes hardware for C-rail application	R8CLAMP-CNL-E1B
Hanger for RG8 cable, double stack; includes hardware for C-rail application	R8CLAMP-CNL-E2B
Hanger for RG8 cable, triple stack; includes hardware for C-rail application	R8CLAMP-CNL-E3B



# ACCESSORY PRODUCTS

## DHK HANGERS

### Ordering Information

Description	ANDREW Material ID
Double Hanger kit for 1/2 in. coaxial cable, triple stack; includes hardware and angle adapter	DHK-12-6-P
Double Hanger kit for 1-5/8 in. coaxial cable, triple stack; includes hardware and angle adapter	DHK-158-6-P
Double Hanger kit for 7/8 in. coaxial cable, single stack; includes hardware and angle adapter	DHK-78-2-P
Double Hanger kits for 6 Fiber and 4 Power cables, two 4-7 mm and 9-11 mm holes (alongside each other), double stack; includes hardware	SH-CLAMP-6F4P-5B



DHK-12-6-P



DHK-158-6-P



SH-CLAMP-6F4P-5B

## CLICK HANGERS

### Ordering Information

Description	ANDREW Material ID
Miniature Click-on Hanger for 13-16 mm cable, Hardware kits listed below	1316MCLICK
Miniature Click-on Hanger for 6-8 mm cable, Hardware kits listed below	68MCLICK
Miniature Click-on Hanger for 9-12 mm cable, Hardware kits listed below	912MCLICK
Hardware Kit for Mini Click-on Hangers, includes 5/16 in. bolts and hardware, 30 mm length	252026-10KT-P
Hardware Kit for Mini Click-on Hangers, includes 5/16 in. bolts and hardware, 64 mm length	252027-10KT-P
Hardware Kit for Mini Click-on Hangers, includes 5/16 in. bolts and hardware, 95 mm length	252028-10KT-P
Hardware Kit for Mini Click-on Hangers, includes 5/16 in. bolts and hardware, 170 mm length	252029-10KT-P
Double Click-on Hanger for 1/2 in. coaxial cable	L4CLICK
Double Click-on Hanger for 7/8 in. coaxial cable	L5CLICKB
Double Click-on Hanger for 1-1/4 in. coaxial cable	L6CLICK
Double Click-on Hanger for 1-5/8 in. coaxial cable	L7CLICK



1316MCLICK  
(shown with hardware kits)



68MCLICK  
(shown with hardware kits)



912MCLICK  
(shown with hardware kits)



L4CLICK



L5CLICKB



L6CLICK



L7CLICK

Double Click-on hanger mounting hardware on page 31

## ACCESSORY PRODUCTS

### HARDWARE KITS

#### Ordering Information

Description	ANDREW Material ID
<b>Hardware Kits</b>	
Stainless Steel Hardware Kit, includes 3/8 in. threaded rod, ceiling mounting plate, nuts and washers	31771-4
Stainless Steel Hardware Kit, includes 3/8 in. threaded rod, ceiling mounting plate, nuts and washers	31771-6
Stainless Steel Hardware Kit for Standard Hangers, includes 3/8 in. hex head bolts and hardware	31769-1
Stainless Steel Hardware Kit for Standard 5 in. hangers, includes 1/2 in. x 1-1/4 in. fillister hardware	31769-4
Stainless Steel Hardware Kit for Standard Hangers, includes 3/8 in. hex head bolts and hardware	31769-5
Stainless Steel Theft Deterrent Enclosure Hardware	CSK4-TORX
Stainless Steel Hardware Kit for 1/2 in. or 7/8 in. Double Click-on Hangers, includes M10 bolts and hardware, 140.97 mm (5.55 in.) length	243095-7
Stainless Steel Hardware Kit for 1/2 in. or 7/8 in. Double Click-on Hangers, includes 3/8 in bolts and hardware, 177.8 mm (7 in.) length	243095-1
Stainless Steel Hardware Kit for 1-1/4 in. or 1-5/8 in. Double Click-on Hangers, includes M10 bolts and hardware, 185.92 mm (7.32 in.) length	243095-8
Stainless Steel Hardware Kit for 1-1/4 in. or 1-5/8 in. Double Click-on Hangers, includes 3/8 in bolts and hardware, 120.65 mm (4.75 in.) length	243095-10
Stainless Steel Hardware Kit for 1/2 in. or 7/8 in. Double Click-on Hangers, includes 3/8 in bolts and hardware, 95.25 mm (3.75 in.) length	243095-9
Stainless Steel Hardware Kit for 1/2 in. or 7/8 in. Double Click-on Hangers, includes M10 bolts and hardware, 101.09 mm (3.98 in.) length	243095-11
Stainless Steel Hardware Kit for 1-1/4 in. or 1-5/8 in. Double Click-on Hangers, includes M10 bolts and hardware, 125.98 mm (4.96 in.) length	243095-12
Stainless Steel Hardware Kit for 1-1/4 in. or 1-5/8 in. Double Click-on Hangers, includes 3/8 in bolts and hardware, 247.65 mm (9.75 in.) length	243095-2
Stainless Steel Hardware Kit for 1/2 in. or 7/8 in. Double Click-on Hangers, includes M10 bolts and hardware, 181.10 mm (7.13 in.) length	243095-3
Stainless Steel Hardware Kit for 1-1/4 in. or 1-5/8 in. Double Click-on Hangers, includes M10 bolts and hardware, 250.95 mm (9.88 in.) length	243095-4
Stainless Steel Hardware Kit for 1/2 in. or 7/8 in. Double Click-on Hangers, includes 3/8 in bolts and hardware, 137.16 mm (5.4 in.) length	243095-5
Stainless Steel Hardware Kit for 1-1/4 in. or 1-5/8 in. Double Click-on Hangers, includes 3/8 in bolts and hardware, 184.15 mm (7.25 in.) length	243095-6



31771-4



31769-1



CSK4-TORX



243095-7



# ACCESSORY PRODUCTS

## GROUNDING KITS

### Ordering Information

Description	Grounding Lead Wire	Lug	ANDREW Material ID
<b>Grounding Kits</b>			
For 1/4 in. and 3/8 in. Coaxial Cable	609 mm	Attached	223158-2
For 1/2 in. Coaxial Cable	609 mm	Attached	SG12-06B2A
	1219 mm	Field Attach	SG12-12B2U
For 7/8 in. Coaxial Cable	609 mm	Attached	SG78-06B2A
	1219 mm	Field Attach	SG78-12B2U
For 1-1/4 in. Coaxial Cable	609 mm	Attached	SG114-06B2A
	1219 mm	Field Attach	SG114-12B2U
For 1-5/8 in. Coaxial Cable	609 mm	Attached	SG158-06B2A
	1219 mm	Field Attach	SG158-12B2U
<b>Universal Grounding Kit</b>			
For 6.35 mm through 15.88 mm cables	609.6 mm	Attached	GK-SUNV
For 12.7 mm through 41.2 mm cables	1524 mm	Field Attached	UG12158-15B4-T
<b>SureGround® Universal Compact Grounding Kit</b>			
For 1/2 in. cable	609 mm	Attached	CSG12-06B1A
For 1/2 in. cable	1219 mm	Field Attached	CSG12-12B2U
For 7/8 in. cable	609 mm	Attached	CSG78-06B1A
For 7/8 in. cable	1219 mm	Field Attached	CSG78-12B2U
For 1 5/8 in. cable	1219 mm	Field Attached	CSG158-12B2U



Grounding Kit  
(SG12-06B2A)



Universal Grounding Kit  
(UG12158-15B4-T)



Universal Grounding Kit  
(GK-SUNV)



SureGround Universal  
Grounding Kit  
(CSG12-06B1A)

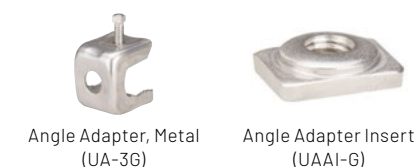
## ACCESSORY PRODUCTS

## INSTALLATION ACCESSORIES

Hoisting/Support Grips are meant to be a permanent part of the installation. They are the primary support for the cable weight and must be anchored to the support structure with tension applied. The anchor point should be approved by the engineer of record, and meet the structure owners guidelines.

### Ordering Information

Description	ANDREW Material ID
<b>Adapters</b> (packs of 10)	
Angle Adapter, compact, M10 tapped hole	243684-M
Adapter, standard, M10 tapped hole	31768A-M
Universal Angle Adapter Insert	UAAI
Angle, universal snap-in, 3/4 in. hole	UA-3
3-way snap-in, stand-off for 2 in.-3 in. round members	STS3-23
3-way, stand-off for 1.5 in.-3 in. round members	TTS3-153
Angle adapter, galvanized metal	UA-3G
Angle adapter insert, 3/8 in. thread, galvanized	UAAI-G
<b>Lace-Up / Support Hoisting Grips</b>	
Lace-up Hoisting Grip for 7/8 in. coaxial cable, elliptical waveguide 77, and Hybrid fiber cables	19256B
Lace-up Hoisting Grip for 1-5/8 in. coaxial cable and elliptical waveguide 44, 52, and 63	24312A
Lace-up Hoisting Grip for 7/8 in. coaxial cable, elliptical waveguide 77, and Hybrid fiber cables	19256B
Lace-up Hoisting Grip with tie wraps for HELIAX cables	19256B-C
Lace-up Hoisting Grip for 1-5/8 in. coaxial cable and elliptical waveguide 44, 52, and 63	24312A
Lace-up Hoisting Grip for 5/8 in. coaxial cable, elliptical waveguide 85, 90, 127, 132 and PWRT-608	29958
Lace-up Hoisting Grip with tape for HELIAX cables	29958-C
Lace-up Hoisting Grip for 1-1/4 in. coaxial cable and elliptical waveguide 64	29961
Lace-up Hoisting Grip with tie wraps for HELIAX cables	29961-C
Support Hoisting Grip for 1/4 in. coaxial cable	L1SGRIP
Support Hoisting Grip for 3/8 in. coaxial cable	L2SGRIP
Support Hoisting Grip for 1/2 in. coaxial cable	L4SGRIP
Support Hoisting Grip for 7/8 in. coaxial cable	L5SGRIP
Support Hoisting Grip for 1-1/4 in. coaxial cable	L6SGRIP
Support Hoisting Grip for 1-5/8 in. coaxial cable	L7SGRIP
Discrete fiber trunk Lace-up Hoisting Grip for all RFFT series cables	LUHG-38
<b>Tape and Weatherproofing Kit</b>	
Weatherproofing kit for connectors and splice, includes (6) 2-1/2 in. butyl rubber rolls and (2) 3/4 in. and (1) 2 in. PVC tape rolls	221213
<b>Banding</b>	
Nylon Cable Tie, 14.25 in. length	40417



ACCESSORY PRODUCTS

CABLE SUPPORT MOUNTS FOR HOISTING GRIPS

Ordering Information

Description	ANDREW Material ID
Cable Support Mount for Guyed Towers to Support Cable, 36" Face	860674607-036
Cable Support Mount for Guyed Towers to Support Cable, 41 or 42" Face	860674607-041-42
Cable Support Mount for Guyed Towers to Support Cable, 48" Face	860674607-048
Heavy Duty Cable Ladder Cross Member with Cable Attachment Points	860674608-006
Heavy Duty Cable Ladder Cross Member with Cable Attachment Points	860674608-009
Heavy Duty Cable Ladder Cross Member with Cable Attachment Points	860674608-012
Heavy Duty Cable Ladder Cross Member with Cable Attachment Points	860674608-U
MONOPOLE HOISTING GRIP ANCHOR,10"-35"	860669616-1035



860674607-036



860674608-006



860669616-1035

## ACCESSORY PRODUCTS

### CABLE ENTRY BOOTS / CUSHIONS

#### Ordering Information

Description	ANDREW Material ID
Cushion Insert with 1 hole for 1/2 in. corrugated coaxial cable	294684
Boot Assembly, 4 in.	294573
Boot Assembly, 5 in.	294574
Cushion Insert with 3 holes for 3/8 in. corrugated or smoothwall coaxial cable	294682
Cushion Insert with 2 holes for 1/2 in. corrugated coaxial cable	294685
Cushion Insert with 3 holes for 1/2 in. corrugated coaxial cable	294686
Cushion Insert with 4 holes for 1/2 in. corrugated coaxial cable	294687
Cushion Insert with 1 hole for 7/8 in. corrugated coaxial cable	294697
Cushion Insert with 2 holes for 7/8 in. corrugated coaxial cable	294698
Cushion Insert with 3 holes for 7/8 in. corrugated coaxial cable	294699
Cushion Insert with 4 holes for 7/8 in. corrugated coaxial cable	294700
Cushion Insert with 1 hole for 1-1/4 in. corrugated coaxial cable	294701
Cushion Insert with 1 hole for HELIAX cables (Fusion tape included)	294701-T
Cushion Insert with 1 hole for 15/8 in. corrugated coaxial cable	294702
Boot Assembly, 5 in., for 1/2 in. corrugated coaxial cable	48939A-17
Boot Assembly, 5 in., for 7/8 in. corrugated coaxial cable	48939A-2
4 in. Boot Assembly for one 10 mm fiber cable and one or two 29 mm power cables	ECI-10-292-4
4 in. Boot Assembly for 3/8 in. cable (1 hole) and 7/8 in. cable (2 holes)	ECI-38-782-4
11-29 mm (0.433-1.142 in.) cable entry seal, entry panel port size 4 in.	FA-102993-HC3
24-54 mm (0.945-2.126 in.) cable entry seal, entry panel port size 4 in.	FA-102997-HC3
Cushion Plugs for 1/2 in. corrugated coaxial cable	PLUG-12
SnapSeal™ Entry Cushion with 1 hole for 1-1/4 in. corrugated coaxial cable	SEC-1114
SnapSeal™ Entry Cushion with 3 holes for 7/8 in. corrugated coaxial cable	SEC-378
SnapSeal™ Entry Cushion with 4 holes for 1/2 in. corrugated coaxial cable	SEC-412
SnapSeal™ Entry Cushion with 6 holes for 1/4 in. corrugated coaxial cable	SEC-614
SnapSeal™ Entry Cushion with 6 holes for 3/8 in. corrugated coaxial cable	SEC-638



Cable Entry Boot  
(FA-102997-HC3)



Cable Entry Boot  
(FA-102993-HC3)



Cable Entry Boot  
(ECI-38-782-4)



Cushion Insert



SnapSeal Entry Cushions

## Technical Support

email: [awpnarsupport@andrew.com](mailto:awpnarsupport@andrew.com)

## Customer Service

(+34) 91-745-2055

(+34) 91-745-2040

[Enquiry@andrew.com](mailto:Enquiry@andrew.com)

<https://www.andrew.com/support/#outdoor-wireless-networks>

Since 1937, ANDREW, an Amphenol company, has driven the evolution of wireless technology. Trusted by mobile network operators and enterprises globally, we work closely with our customers to deliver innovative solutions that enhance connectivity experiences both outdoors and indoors. Our dedicated global team is committed to advancing the industry, fueled by the vision that a better-connected future is possible.



---

[ANDREW.COM](https://www.andrew.com)

Visit our website or contact your local ANDREW representative for more information.

©2026 Amphenol Corporation. All rights reserved. Amphenol and ANDREW are registered trademarks of Amphenol and/or its affiliates in the U.S. and other countries. All product names, trademarks and registered trademarks are property of their respective owners. CO-200546-EN (01/26)