

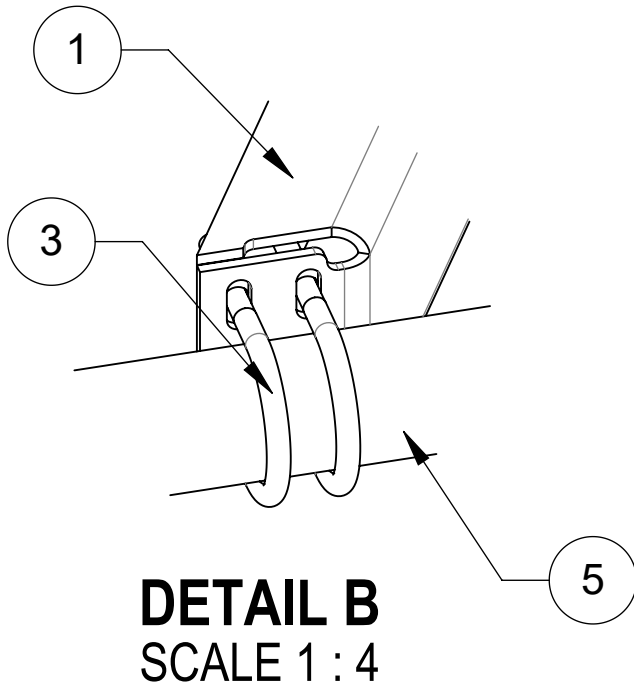
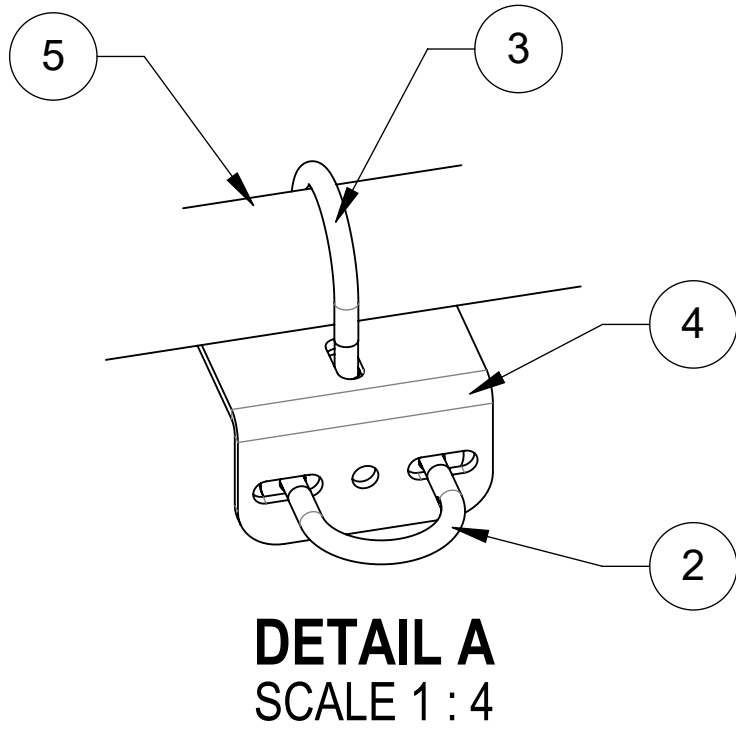
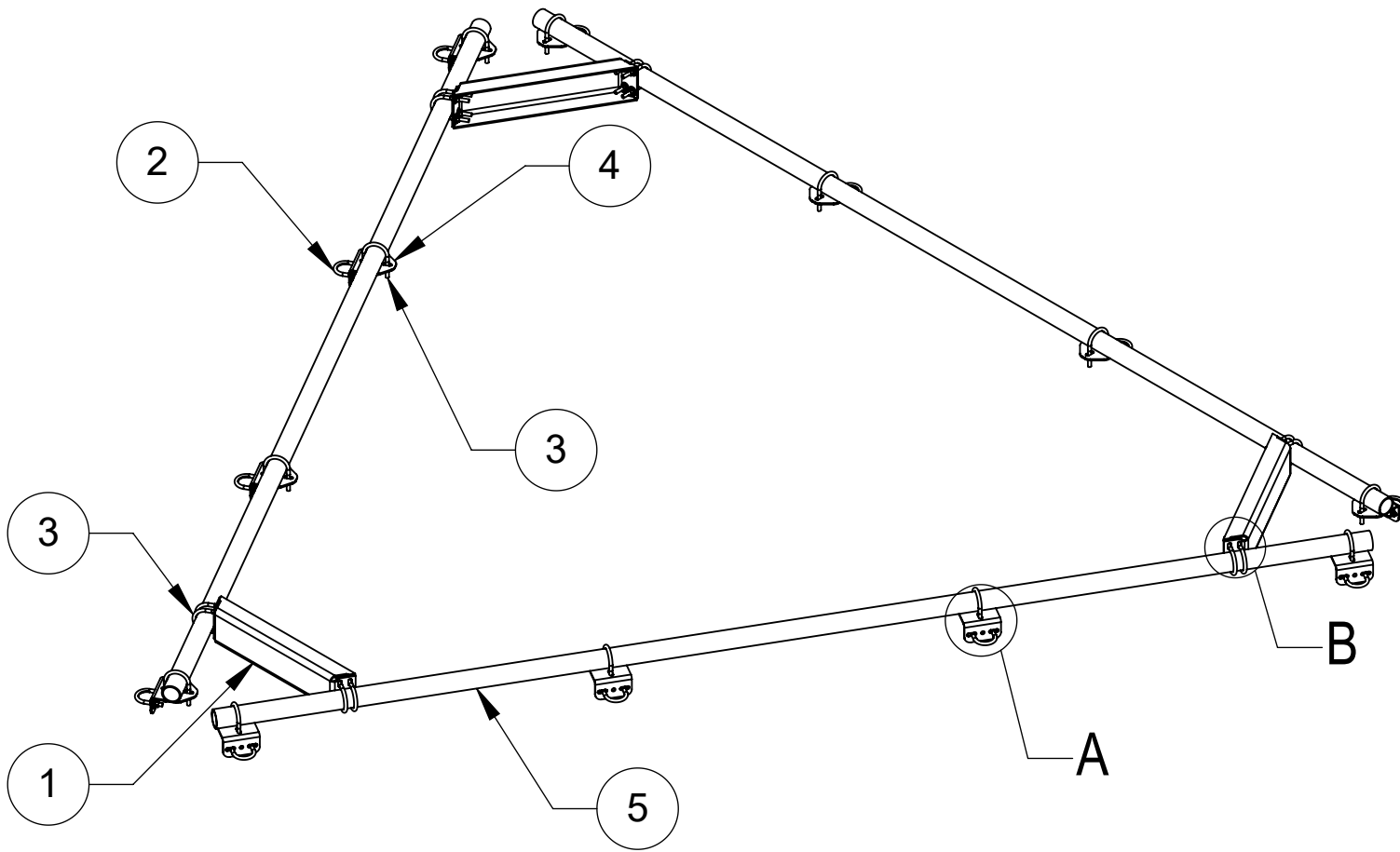
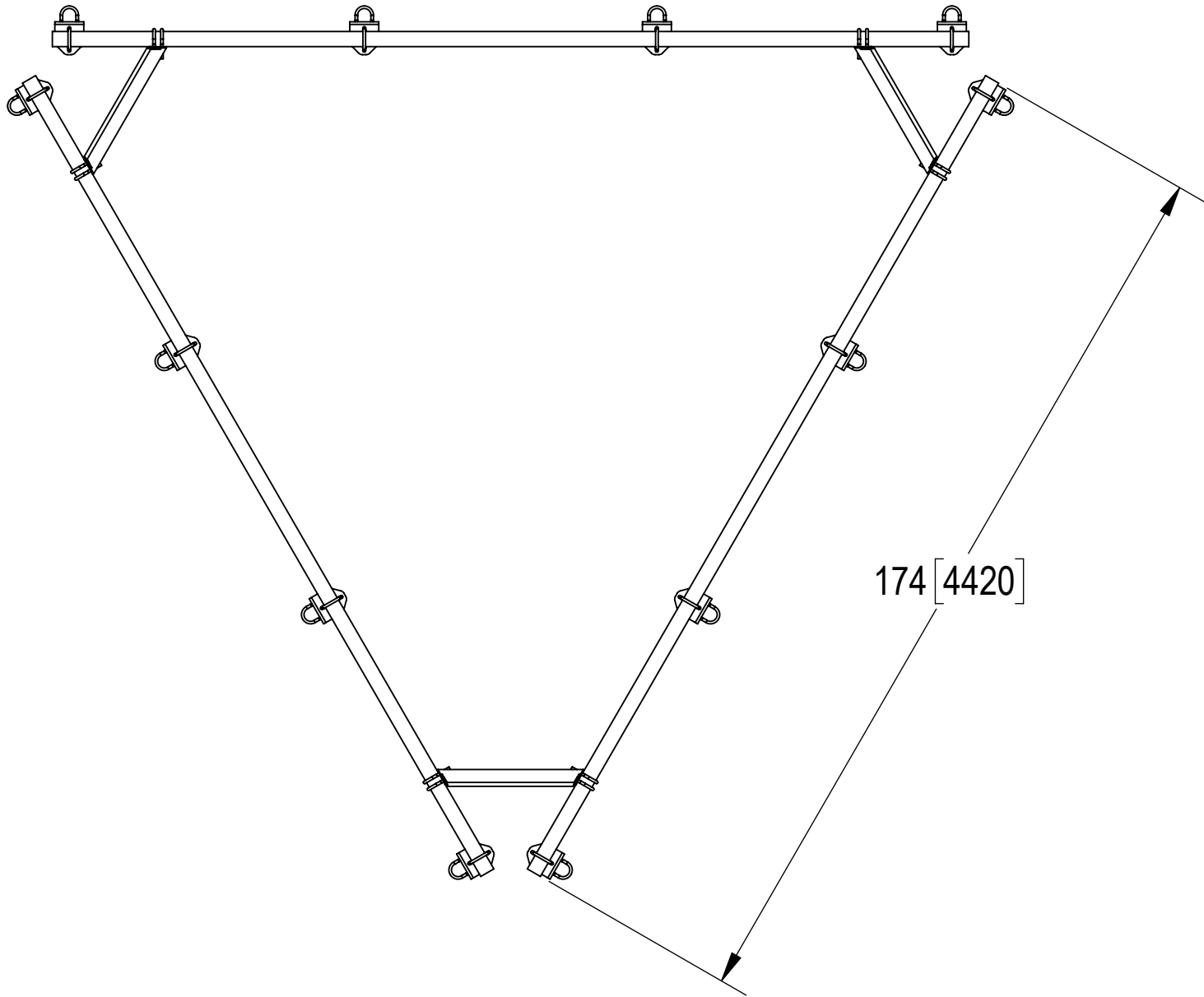
D

C

B


A

- 1.0 GENERAL NOTES
- 1.1 ALL METRIC DIMENSIONS ARE IN BRACKETS [X. X]
- 1.2 FOR PATENT INFO: <https://www.adwpat.com>
- 2.0 DESIGN NOTES
- 2.1 ANY HAZARDS OR OBSTRUCTIONS TO THE CLIMBING FACILITY AND SAFETY CLIMB MUST BE IDENTIFIED PRIOR TO INSTALLING THE APPURTENANCE. ADDITIONAL PRODUCTS MAY BE REQUIRED TO MAINTAIN THE INTEGRITY OF THE SAFETY CLIMB. DURING INSTALLATION, TEMPORARY AND/OR PERMANENT PRECAUTIONARY MEASURES SHOULD BE TAKEN TO PRESERVE THE CLIMBING FACILITY AND/OR SAFETY CLIMB.
- 3.0 MANUFACTURING/SPECIAL REQUIREMENTS
- 3.1 TIGHTEN ALL BOLTS SECURING FLAT PLATES BY THE TURN-OF-NUT METHOD. TIGHTEN ALL U-BOLTS USING TURN-OF-NUT METHOD WITH ATTENTION TO LEAVE EQUAL DISTANCE AND EQUAL FORCE ON EACH LEG OF THE U-BOLT.
- 4.0 TEST
- 5.0 PACKAGING
- 5.1 PACKAGING SHALL MEET ANDREW REQUIREMENTS PER DOCUMENT IS-PL-3005
- 5.2 PRINTED DOCUMENT TO BE PLACED INSIDE POLYBAG AND THEN IN SHIPPING CONTAINER
- 5.3 EXTRA HARDWARE MAY BE SUPPLIED, BAGGED AND SHIPPED

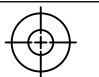
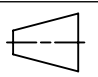


COMPONENT PART NUMBERS PROVIDED FOR ASSEMBLY PURPOSES; INDIVIDUAL COMPONENTS MAY BE SHIPPED AS PARTS WITHIN AN INCLUDED KIT.					
ITEM NO.	PART NUMBER	DESCRIPTION	QTY.	WEIGHT	NOTE NO.
1	MT19525	CORNER WELDMENT FOR MT-195	3	22.11 LBS	
2	GUB-4240	1/2" X 2-1/2" X 4" GALV U-BOLT	12	0.56 LBS	
3	GUB-4352	1/2" X 3" X 5-1/4" GALV U-BOLT	24	0.71 LBS	
4	XAU01	ANGLE, CROSSOVER, 1.9-3.5" X 1.9-3.5" OD	12	2.98 LBS	
5	MT-546-174	PIPE, 2.875"OD X 174"	3	84.30 LBS	

DENSITY	MASS	385.69	lbs/in³
VOLUME	1358.84		lbs
SURFACE AREA	13071.51		in³
HEIGHT	8"		
LENGTH	191"		
WIDTH	164"		



**ANDREW**® an Amphenol company

TOLERANCES				SAP MATERIAL MASTER						
0 PLACE	X[X] ± 0.25[6.3]	2 PLACE	.XX[X] ± 0.06[1.5]	<b>MT-195-14HD</b>						
1 PLACE	.X[X] ± 0.12[3.0]	ANGLES	± 2°							
FINISH				MATERIAL						
UNLESS OTHERWISE SPECIFIED DIMENSIONS ARE IN INCHES INTERPRET PER ANSI Y 14.5M-1994		NAME	DATE	<b>HANDRAIL KIT, 14' FACE, HD, MONOPOLE PLT</b>						
	CE	YX1027	13AUG25							
	RW	YX1027	08/13/2025							
	AD	YMENG	08/15/2025							
	RE	YMENG	08/15/2025	<b>MT-195-14HD</b>						
ECN 50104394AMO										
SIZE		Auth Group	INSL	MODEL		DRAWING				
<b>C</b>			03	VERSION	STATUS	REVISION	VERSION	STATUS	REVISION	SHEET 1 OF 1
				RE	D	00	RE	C		

D

C

B

A