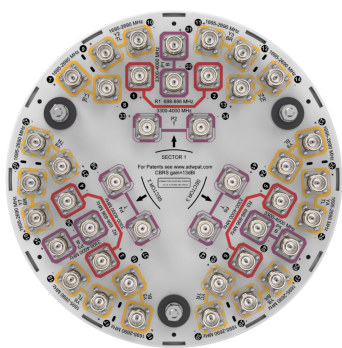


3X-NV4SS-65S-F2



42-port Tri-sector antenna, 6x 698-896MHz, 24x 1695–2690MHz and 12x 3300- 4000MHz, 65° Horizontal Beamwidth, fixed tilt.

General Specifications

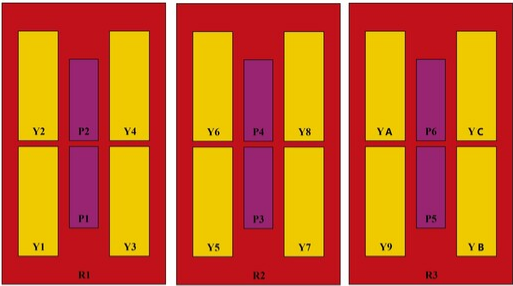
Antenna Type	DualPol® tri-sector
Band	Multiband
Grounding Type	RF connector inner conductor and body grounded to reflector and mounting bracket
Performance Note	Outdoor usage
RF Connector Interface	4.3-10 Female
RF Connector Location	Bottom
RF Connector Quantity, high band	12
RF Connector Quantity, mid band	24
RF Connector Quantity, low band	6
RF Connector Quantity, total	42

Dimensions

Length	610 mm 24.016 in
Net Weight, antenna only	15.6 kg 34.392 lb
Outer Diameter	370 mm 14.567 in

Array Layout

3X-NV4SS-65S-F2

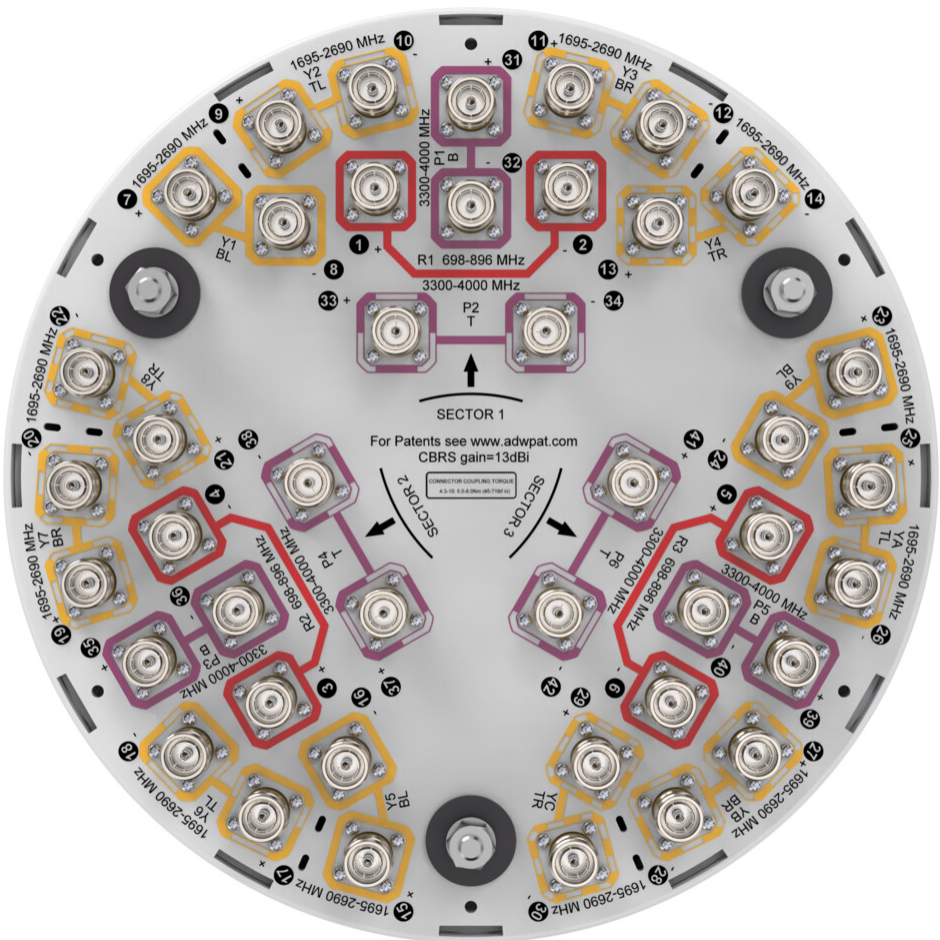


Array ID	Frequency (MHz)	RF Connector	RET (N/A)	AISG No.	RET UID
R1	698-896	1 - 2	N/A	NA	N/A
Y1	1695-2690	7 - 8			
Y2	1695-2690	9 - 10			
Y3	1695-2690	11 - 12			
Y4	1695-2690	13 - 14			
P1	3300-4000	31 - 32			
P2	3300-4000	33 - 34			
R2	698-896	3 - 4			
Y5	1695-2690	15 - 16			
Y6	1695-2690	17 - 18			
Y7	1695-2690	19 - 20			
Y8	1695-2690	21 - 22			
P3	3300-4000	35 - 36			
P4	3300-4000	37 - 38			
R3	698-896	5 - 6			
Y9	1695-2690	23 - 24			
YA	1695-2690	25 - 26			
YB	1695-2690	27 - 28			
YC	1695-2690	29 - 30			
P5	3300-4000	39 - 40			
P6	3300-4000	41 - 42			

(Sizes of colored boxes are not true depictions of array sizes)

Port Configuration

3X-NV4SS-65S-F2



Electrical Specifications

Impedance	50 ohm
Operating Frequency Band	1695 – 2690 MHz 3300 – 4000 MHz 698 – 896 MHz
Polarization	±45°
Total Input Power, maximum	2,320 W

Electrical Specifications

	R1-R3	Y1-YC	Y1-YC	Y1-YC	P1-P6
Frequency Band, MHz	698–896	1695–1920	1920–2200	2300–2690	3300–4000
RF Port	1-6	7-30	7-30	7-30	31-42
Gain, dBi	10.5	11.3	11.4	12	14.1
Gain at Mid Tilt, dBi	10.3	10.6	10.8	11.4	13.6

3X-NV4SS-65S-F2

Beamwidth, Horizontal, degrees	76	66	71	70	58
Beamwidth, Vertical, degrees	37.8	36.5	31.6	26.6	15.7
Beam Tilt, degrees	6	4	4	4	2
Front-to-Back Ratio at 180°, dB	29	26	28	29	30
Front-to-Back Total Power at 180° ± 30°, dB	19	19	20	22	26
CPR at Boresight, dB	19	20	20	18	14
Isolation, Cross Polarization, dB	25	25	25	25	25
Isolation, Inter-band, dB	25	25	25	25	25
VSWR Return loss, dB	1.5 14.0	1.5 14.0	1.5 14.0	1.5 14.0	1.5 14.0
PIM, 3rd Order, 2 x 20 W, dBc	-153	-153	-153	-153	-145
Input Power per Port at 50°C, maximum, watts	100	100	100	100	75

Mechanical Specifications

Wind Loading @ Velocity, frontal	129.0 N @ 150 km/h (29.0 lbf @ 150 km/h)
Wind Loading @ Velocity, lateral	129.0 N @ 150 km/h (29.0 lbf @ 150 km/h)
Wind Loading @ Velocity, maximum	129.0 N @ 150 km/h (29.0 lbf @ 150 km/h)
Wind Speed, maximum	241 km/h (150 mph)

Packaging and Weights

Width, packed	478 mm 18.819 in
Depth, packed	464 mm 18.268 in
Length, packed	894 mm 35.197 in
Weight, gross	19.8 kg 43.651 lb

Regulatory Compliance/Certifications

Agency	Classification
ISO 9001:2015	Designed, manufactured and/or distributed under this quality management system
UK-ROHS	Compliant

* Footnotes

Performance Note	Severe environmental conditions may degrade optimum performance
------------------	---