

6VV6SS-10B-R2B



48 Port multibeam ultra-high capacity antenna, 6 beams for 1695-2690 MHz, 6 beams for 3300-4000 MHz, 4 ports for each beam, 1 RET per band

- 3.5 GHz beams aligned with mid band beams for use with 5G NSA or SA
- All beams support 4T4R service or 2T2R service for 2 licensed bands
- Ultra-high capacity antenna provides increased throughput for special events or very high traffic locations
- Provides higher capacity than single radio massive MIMO solution
- Multibeam antenna with 6x MB beams and 6x 3GHz beams

General Specifications

Antenna Type	Multibeam
Band	Multiband
Color	Light Gray (RAL 7035)
Grounding Type	RF connector inner conductor and body grounded to reflector and mounting bracket
Performance Note	Outdoor usage
Radome Material	Fiberglass, UV resistant
Radiator Material	Low loss circuit board
Reflector Material	Aluminum
RF Connector Interface	4.3-10 Female
RF Connector Location	Bottom
RF Connector Quantity, high band	24
RF Connector Quantity, mid band	24
RF Connector Quantity, total	48

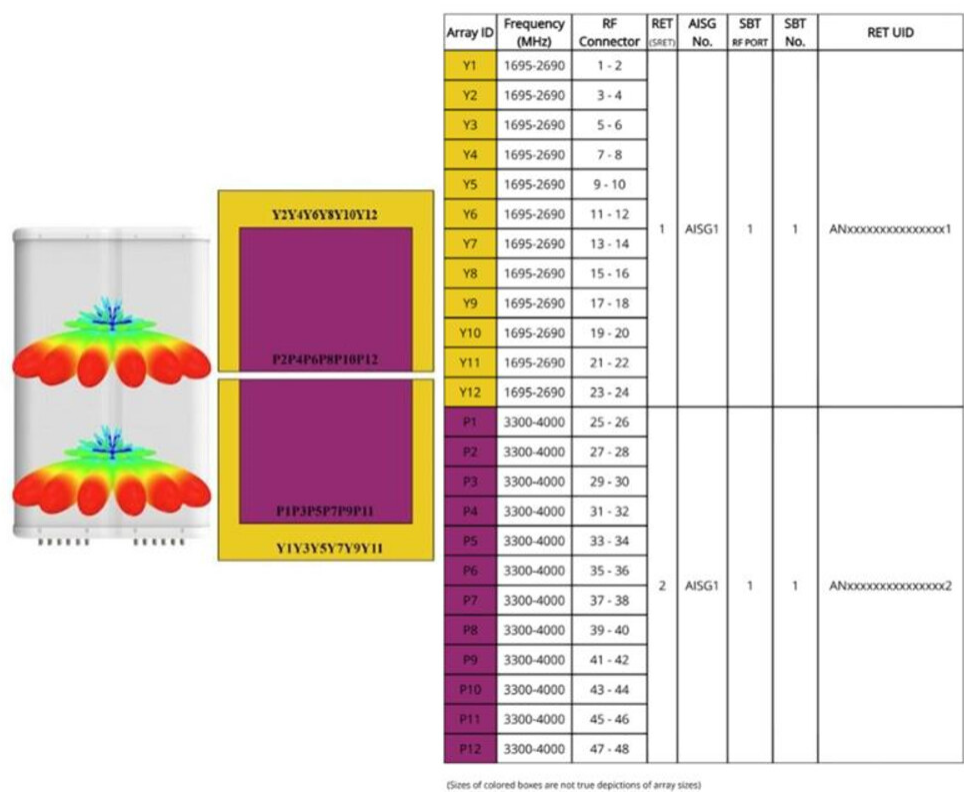
Remote Electrical Tilt (RET) Information

RET Hardware	CommRET v2
RET Interface	8-pin DIN Female 8-pin DIN Male
RET Interface, quantity	1 female 1 male
Input Voltage	10–30 Vdc
Internal RET	High band (1) Mid band (1)
Power Consumption, active state, maximum	10 W

6VV6SS-10B-R2B

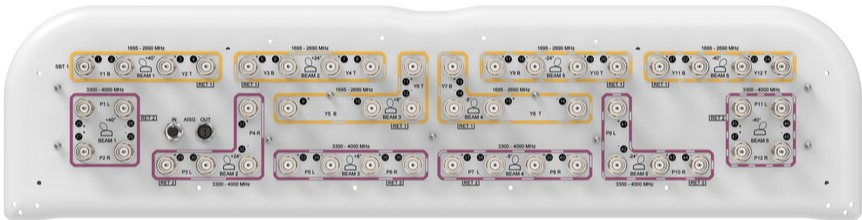
Power Consumption, idle state, maximum	2 W
Protocol	3GPP/AISG 2.0
Dimensions	
Width	970 mm 38.189 in
Depth	235 mm 9.252 in
Length	1998 mm 78.661 in
Net Weight, antenna only	89 kg 196.211 lb

Array Layout



Port Configuration

6VV6SS-10B-R2B



Electrical Specifications

Impedance	50 ohm
Operating Frequency Band	1695 – 2690 MHz 3300 – 4000 MHz
Polarization	±45°
Total Input Power, maximum	2,880 W

Electrical Specifications

	Y1-Y12	Y1-Y12	Y1-Y12	P1-P12	P1-P12
Frequency Band, MHz	1695–1990	1920–2180	2300–2690	3300–3700	3700–4000
RF Port	1-24	1-24	1-24	25-48	25-48
Gain, dBi	21.5	22	22.4	19.6	19.7
Beam Centers, Horizontal, degrees	±8 ±24 ±40	±8 ±24 ±40	±8 ±24 ±40	±8 ±24 ±40	±8 ±24 ±40
Beamwidth, Horizontal, degrees	12	11	9	12	11
Beamwidth, Vertical, degrees	11.6	10.6	8.7	14	12.8
Beam Tilt, degrees	4–10	4–10	4–10	4–10	4–10
USLS (First Lobe), dB	10	10	10	10	10

6VV6SS-10B-R2B

Front-to-Back Ratio at 180°, dB	35	35	30	27	27
Isolation, Cross Polarization, dB	25	25	25	25	25
Isolation, Inter-band, dB	25	25	25	25	25
Isolation, Beam to Beam, dB	19	19	18	15	15
VSWR Return loss, dB	1.5 14.0	1.5 14.0	1.5 14.0	1.5 14.0	1.5 14.0
PIM, 3rd Order, 2 x 20 W, dBc	-153	-153	-153	-145	-145
Input Power per Port, maximum, watts	120	120	120	40	40

Mechanical Specifications

Wind Loading @ Velocity, frontal	2,480.0 N @ 150 km/h (557.5 lbf @ 150 km/h)
Wind Loading @ Velocity, lateral	756.0 N @ 150 km/h (170.0 lbf @ 150 km/h)
Wind Loading @ Velocity, rear	2,480.0 N @ 150 km/h (557.5 lbf @ 150 km/h)
Wind Speed, maximum	241 km/h (150 mph)

Packaging and Weights

Width, packed	1122 mm 44.173 in
Depth, packed	561 mm 22.087 in
Length, packed	2264 mm 89.134 in
Weight, gross	129 kg 284.396 lb

Regulatory Compliance/Certifications

Agency	Classification
UK-ROHS	Compliant

Included Products

BSAMNT-8	–	Wide Profile Antenna Down tilt Mounting Kit for 3.0 - 4.5 in (75 - 115mm) OD round members. Kit contains one scissor top bracket set and one bottom bracket set.
----------	---	--

* Footnotes

Performance Note	Severe environmental conditions may degrade optimum performance
------------------	---