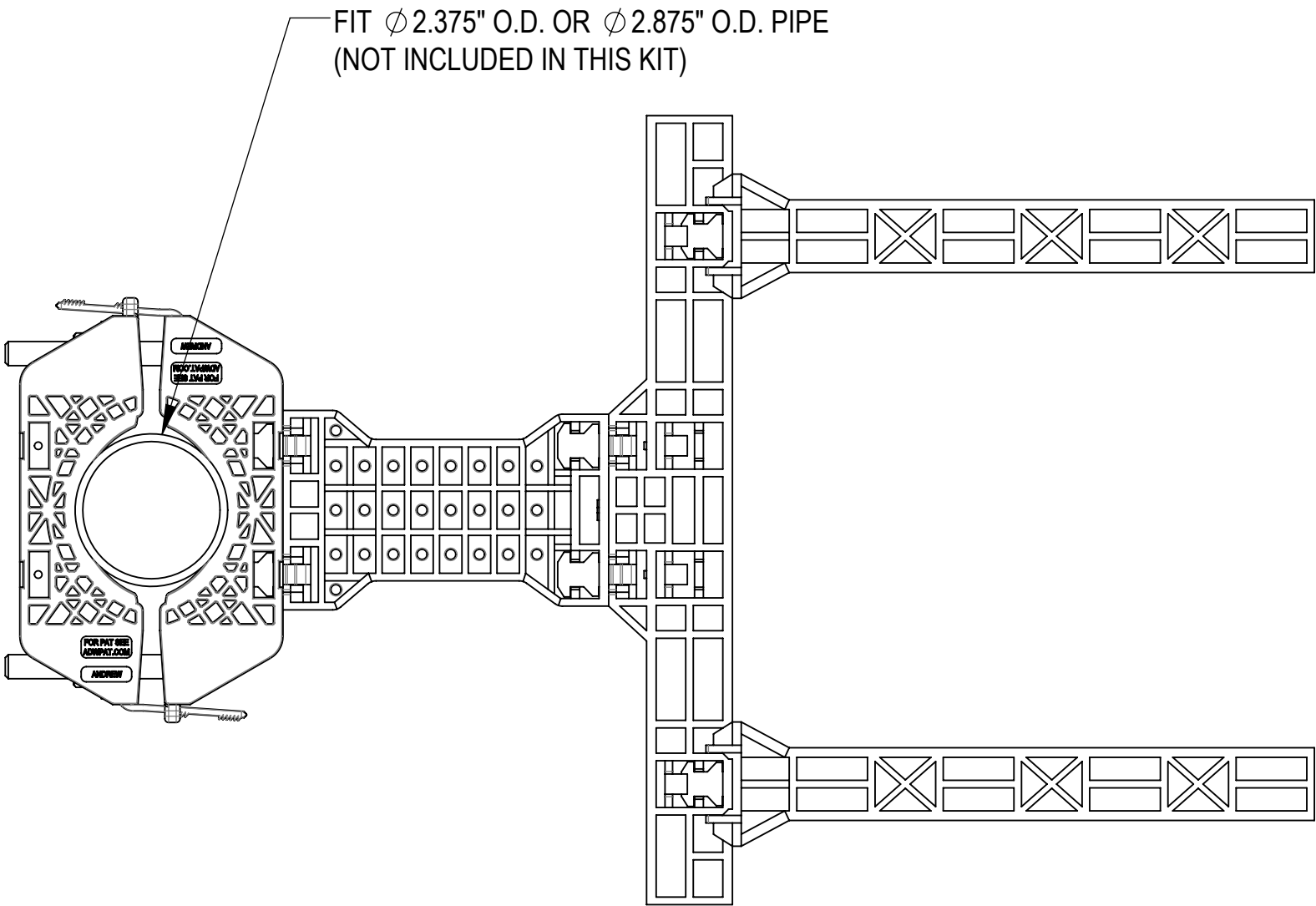
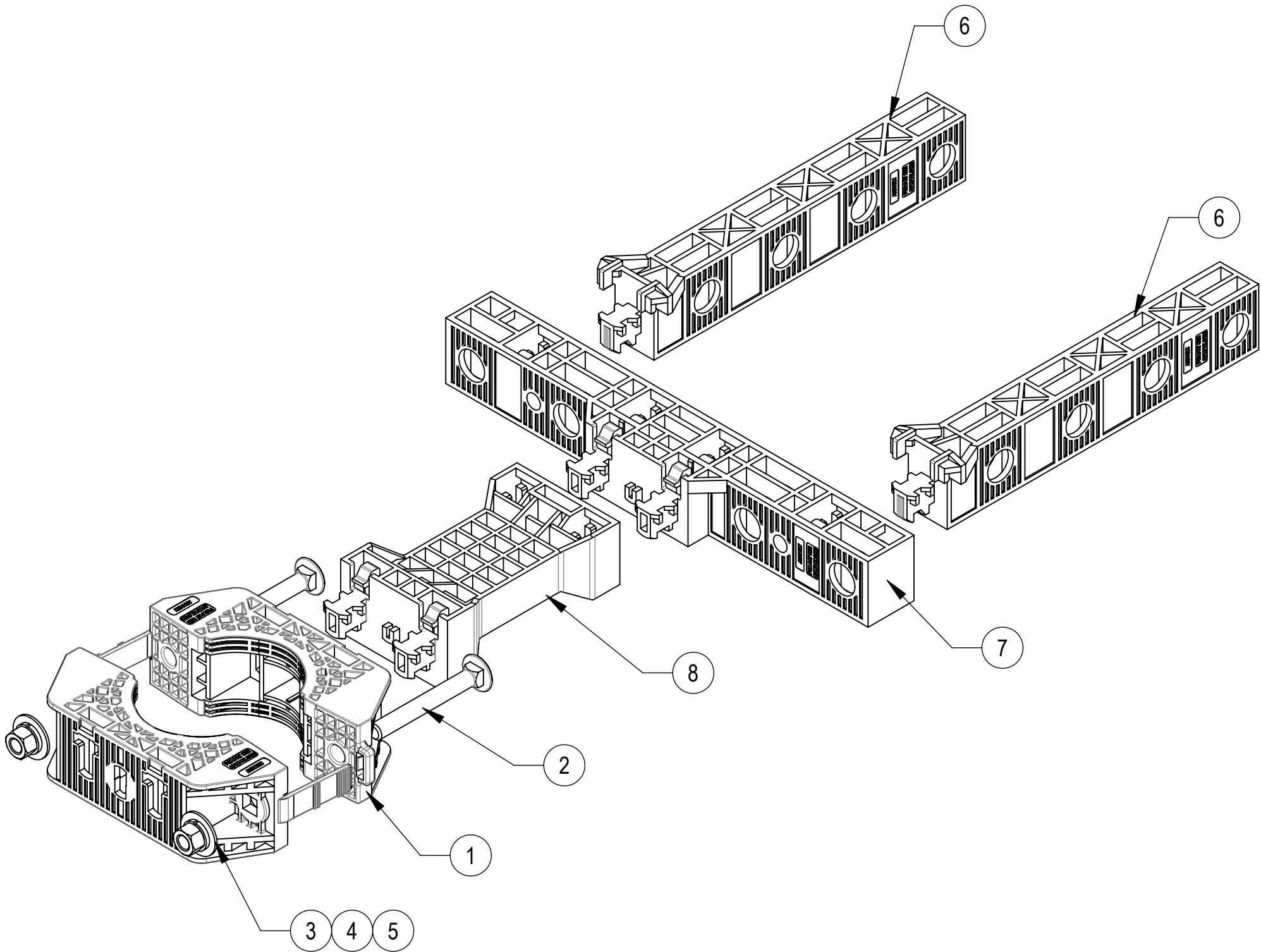


- 1.0 GENERAL NOTES
- 1.1 ALL METRIC DIMENSIONS ARE IN BRACKETS [X.X]
- 1.2 FEATURES CRITICAL TO QUALITY ARE INDICATED IN ROUNDED BOX (X.X)
- 2.0 DESIGN NOTES
- 3.0 MANUFACTURING/SPECIAL REQUIREMENTS
- 3.1 TIGHTEN ALL BOLTS SECURING FLAT PLATES BY THE TURN-OF-NUT METHOD.
- 4.0 TEST
- 5.0 PACKAGING
- 5.1 PACKAGING MUST BE AGREED TO IN WRITING BY ANDREW PRIOR TO MASS-PRODUCTION APPROVAL.
- 5.2 PARTS ARE TO BE PACKAGING IN A MANNER OT PREVENT DAMAGE DURING SHIPMENT & STORAGE.
- 5.3 PACKAGING TO ADHERE TO ALL ANDREW, LOCAL & FOREIGN (WHERE APPLICABLE) SHIPPING REQUIREMENTS.
- 5.4 PACKAGING & PARTS TO BE FREE OF ALL CONTAMINANTS INCLUDING PAPER FROM BOX, DIRT, DUST, OILS, MOLD RELEASE, DETERGENT AND ALL OTHER FOREIGN MATERIALS.




ASSEMBLY TOP VIEW



INSTALLATION ASSEMBLY

COMPONENT PART NUMBERS PROVIDED FOR ASSEMBLY PURPOSES;
INDIVIDUAL COMPONENTS MAY BE SHIPPED AS PARTS WITHIN AN INCLUDED KIT.

ITEM NO.	PART NUMBER	DESCRIPTION	QTY.	WEIGHT
1	PGCS-1000	CLAMP,FRONT-REAR, POLYMER 4CP	2	0.33 LBS
2	9615-15	BOLT,CARRIAGE,3/8-16,3,STL GALV	2	0.12 LBS
3	GWf-03	3/8" GALV FLAT WASHER	2	0.01 LBS
4	GWl-03	3/8" GALV LOCK WASHER	2	0.01 LBS
5	GN-03	3/8" GALV HEX NUT	2	0.02 LBS
6	PGCS-5000	PANEL, HALF, POLYMER, 8CP	2	0.30 LBS
7	PGCS-7000	PANEL, POLYMER, 8CP	1	0.47 LBS
8	PGCS-8000	ADAPTER, POLYMER, 4P	1	0.30 LBS



TOLERANCES

1 PLACE .X[X] ± 0.2[6.3] 3 PLACE .XXX[X] ± 0.060[1.5]

2 PLACE .XX[X] ± 0.12[3.0] ANGLES ± 2°

SAP MATERIAL MASTER

PGP-CS20-R

FINISH

MATERIAL
ALUMINUM 5052-H32, 0.125" THICK

UNLESS OTHERWISE SPECIFIED
DIMENSIONS ARE IN INCHES
INTERPRET PER ANSI Y 14.5M-1994

	NAME	DATE	TITLE
CE	JL1183	14JUN24	PG PREMIUM,CBL-SUPPORT,20-HOLE
RW	JL1183	06/11/2025	
AD	JX1030	06/11/2025	
RE	JL1183	06/11/2025	
ECN 50103287AMO			

SCALE
1:3

DOCUMENT NO.
PGP-CS20-R

SIZE	Auth Group	INSL	MODEL			DRAWING			SHEET 1 OF 1
C			VERSION	STATUS	REVISION	VERSION	STATUS	REVISION	
			01	RE	B	01	RE	B	

DENSITY	MASS	2.12	lbs/in³
	VOLUME	50.91	lbs
	SURFACE AREA	867.46	in³
	HEIGHT	12.3"	
	LENGTH	20.2"	
	WIDTH	2.1"	

Confidential